

Supplementary material

Table i. Representative platelet, white blood cell (WBC), and red blood cell (RBC) counts in platelet-rich plasma (PRP)

Age, yrs	Gender	Platelets (plt/ μ l)	WBCs (10^3 / μ l)*	RBCs (10^6 / μ l)*
30	Female	508×10^3	0.1	0.01
33	Male	550×10^3	0.1	0.03
36	Female	291×10^3	0.1	0.01
38	Male	352×10^3	0.0	0.01
41	Male	321×10^3	0.0	0.01
75	Female	382×10^3	0.2	0.03
76	Female	514×10^3	0.0	0.01
77	Female	336×10^3	0.0	0.00
83	Male	397×10^3	0.1	0.02
86	Male	512×10^3	0.1	0.01
Mean: 58 (SD 23)		Mean: 416×10^3 (SD 95×10^3)	Mean: 0.1 (SD 0.1)	Mean: 0.01 (SD 0.01)

*Values fall below the haematology analyzer's linear range for accurate reporting ($0.37 \times 10^3/\mu$ l to $120.82 \times 10^3/\mu$ l for white blood cells and $0.22 \times 10^6/\mu$ l to $7.8 \times 10^6/\mu$ l for red blood cells)

Table ii. Representative platelet count in platelet-rich plasma (PRP) and concentrated PRP

Age, yrs	Gender	Platelets in PRP (plt/ μ l)	Platelets in concentrated PRP (plt/ μ l)	Fold change
30	Female	508×10^3	9.6×10^6	18.9
33	Male	550×10^3	9.4×10^6	17.1
36	Female	291×10^3	7.5×10^6	25.8
38	Male	352×10^3	8.0×10^6	22.7
41	Male	321×10^3	6.9×10^6	21.5
75	Female	382×10^3	8.6×10^6	22.5
76	Female	514×10^3	10.2×10^6	19.8
77	Female	336×10^3	6.4×10^6	19.0
83	Male	397×10^3	8.9×10^6	22.4
86	Male	512×10^3	12.1×10^6	23.6
Mean: 58 (SD 23)		Mean: 416×10^3 (SD 95×10^3)	Mean: 8.8×10^6 (SD 1.7×10^6)	Mean: 21.3 (SD 2.6)

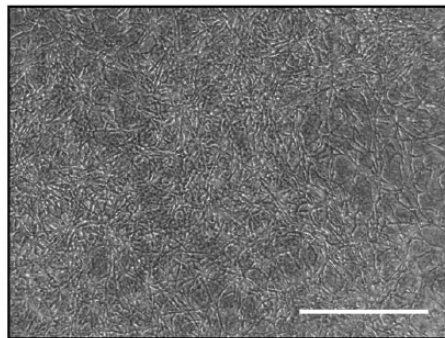


Fig. aa

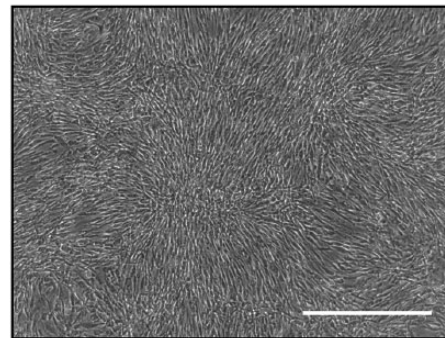


Fig. ab

Tenocyte proliferation is restricted by hydrogel formation. Representative images of tenocytes from a single tenocyte donor (81-year-old male, palmaris tendon) show platelet lysate (PL)-induced cell growth in a) the presence and b) the absence of hydrogel formation. Scale bar = 500 μ m.