

Bone & Joint Open

Supplementary Material

10.1302/2633-1462.511.BJO-2024-0121.R1



Fig a. A customized 3D-printed acetabular implant features osteointegrable surfaces to enhance bone ingrowth.

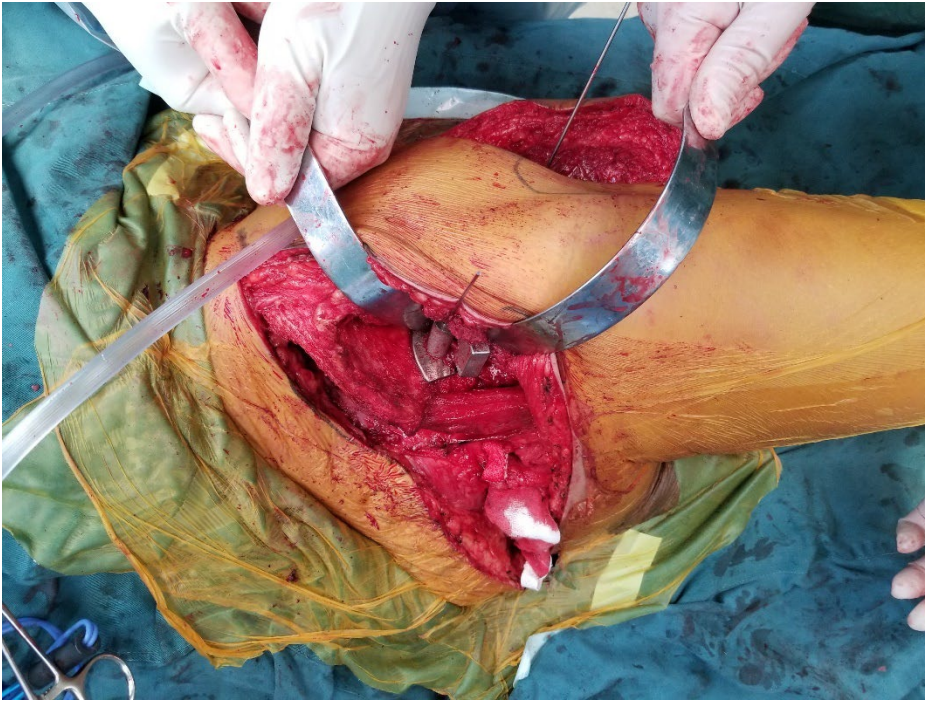
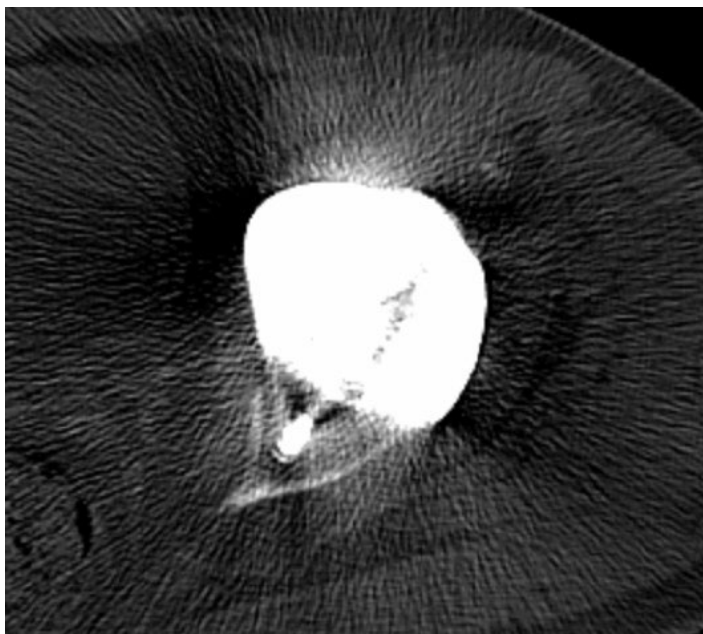


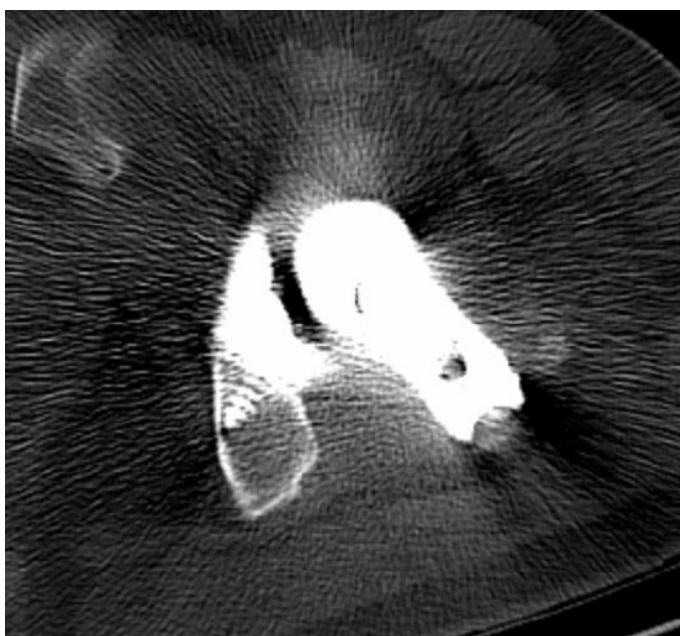
Fig b. Ilioinguinal incision combined with Kocher-Langenbeck approach was conducted for patients with hip joint tumour originating from the acetabulum.



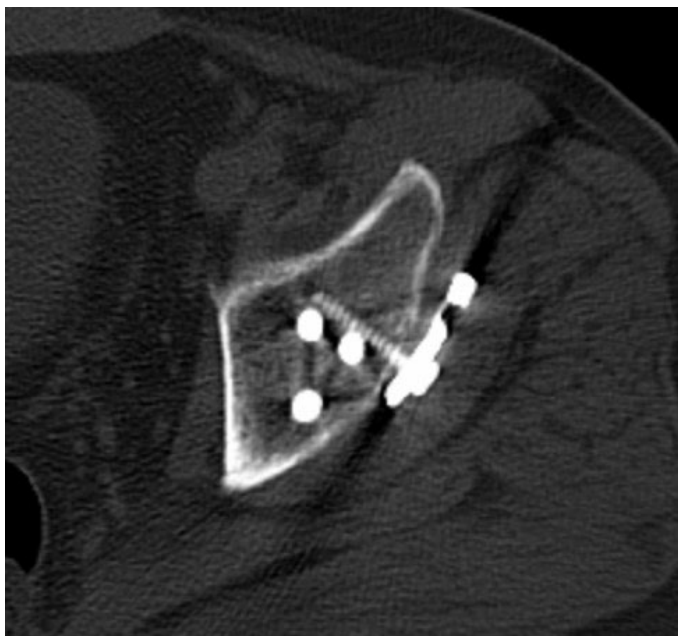
a



b



c



d

Fig c. a) Iliac and sciatic screws of varying lengths with diameter of 6 mm. b) to d) Transverse CT scan displaying the installation and direction of iliac and sciatic screws.