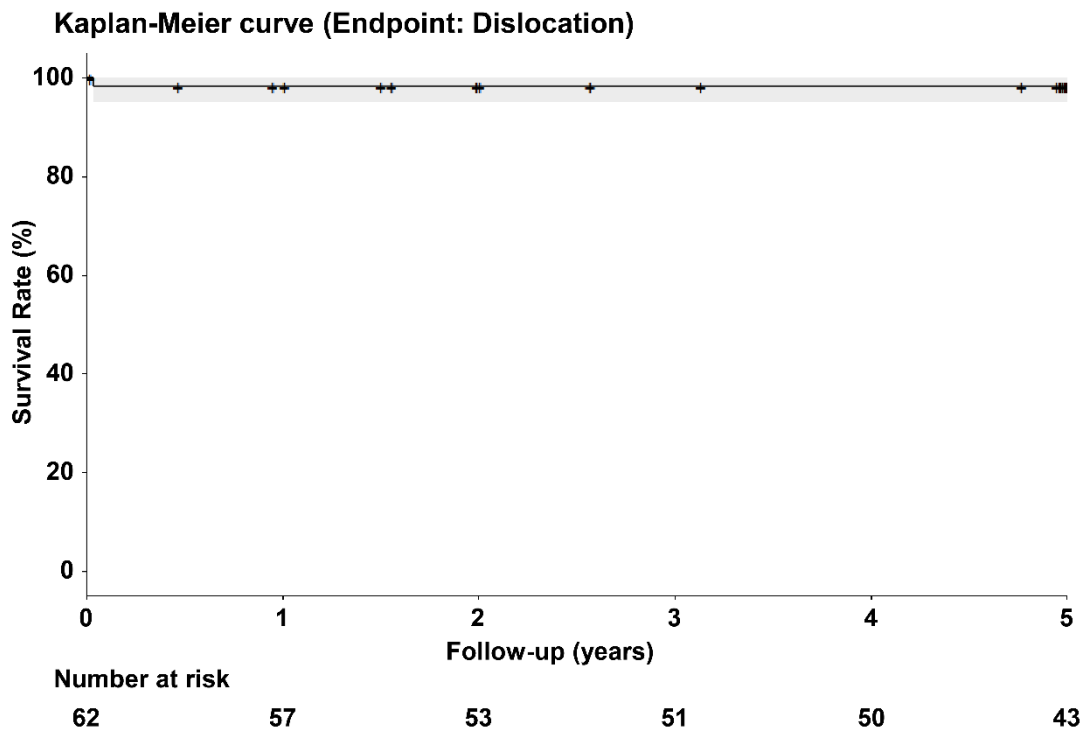
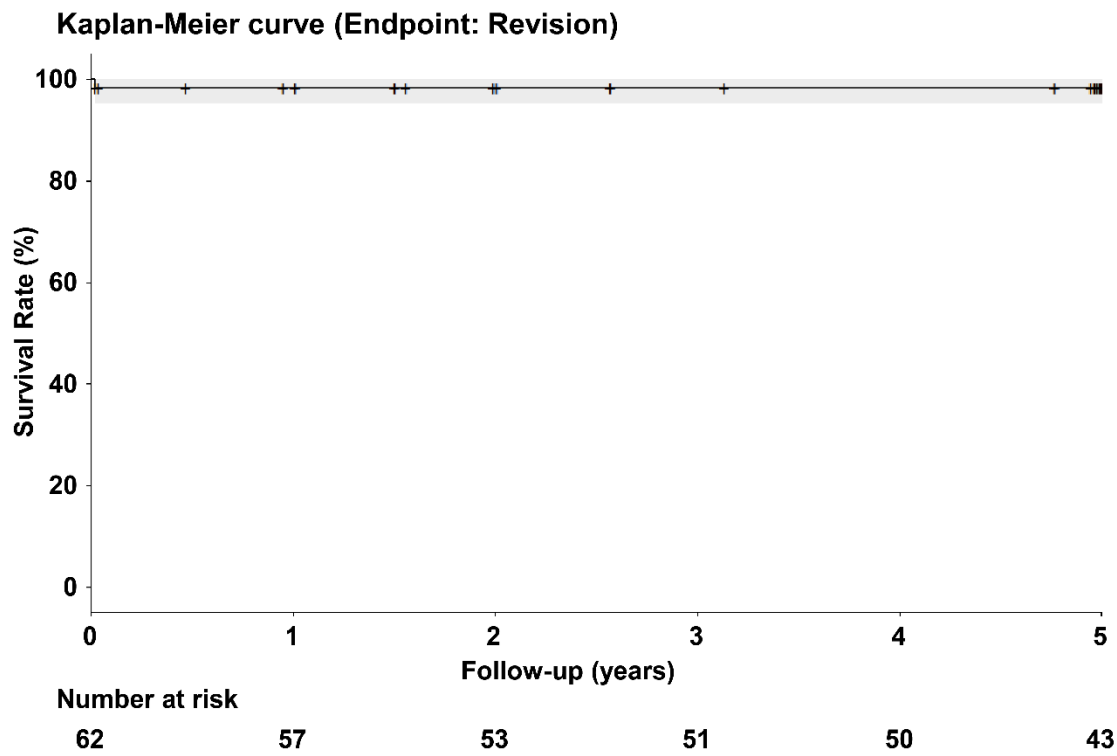


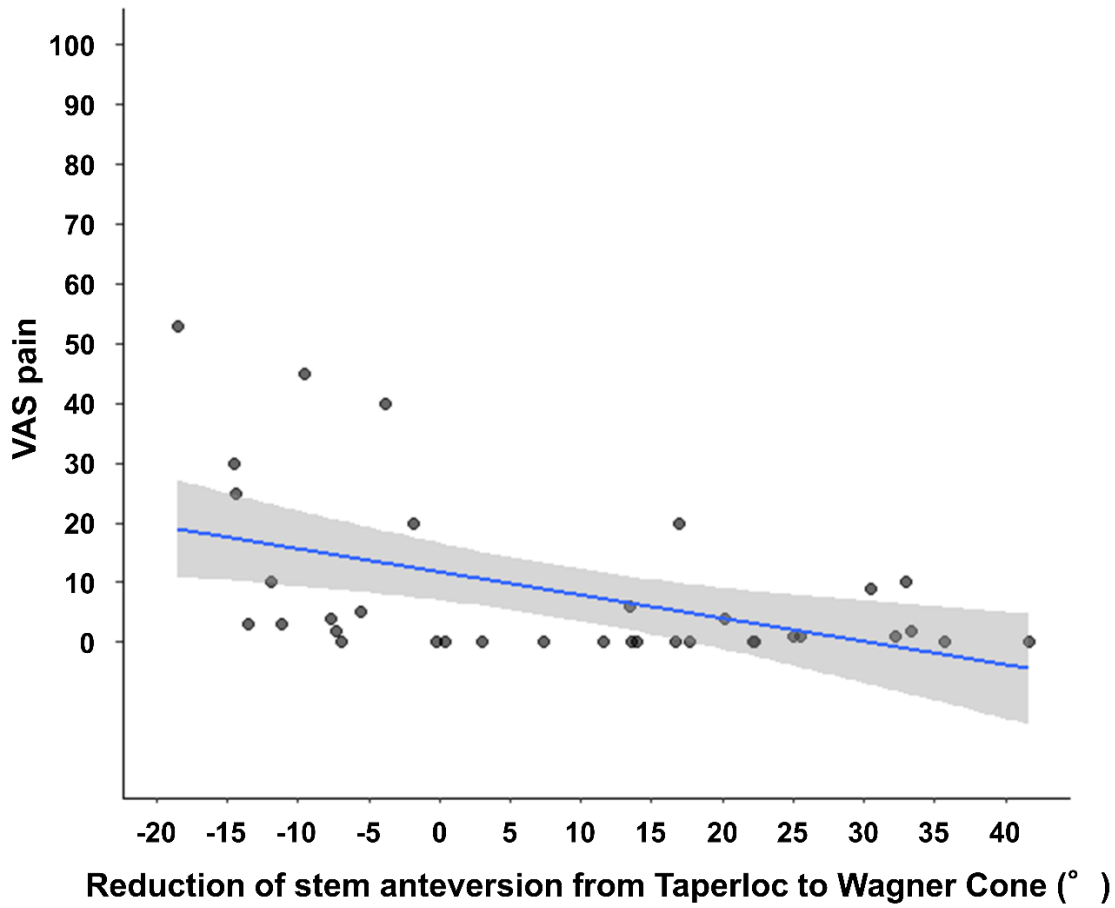
10.1302/2633-1462.510.BJO-2024-0144.R1



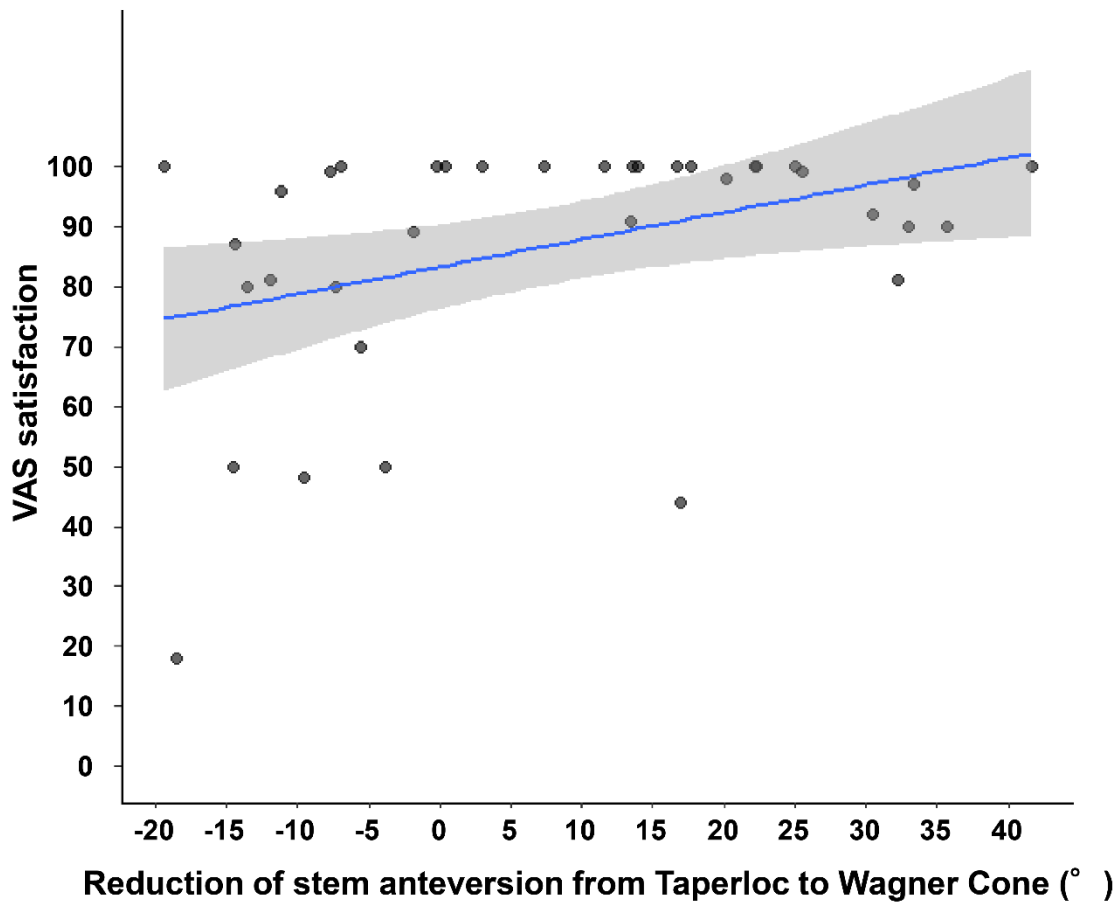
**Fig a.** Kaplan-Meier survival curve and 95% CI. The endpoint was dislocation. Patients lost to follow-up (including death) were censored at the date of last contact, and those who underwent revision were censored at the time of revision.



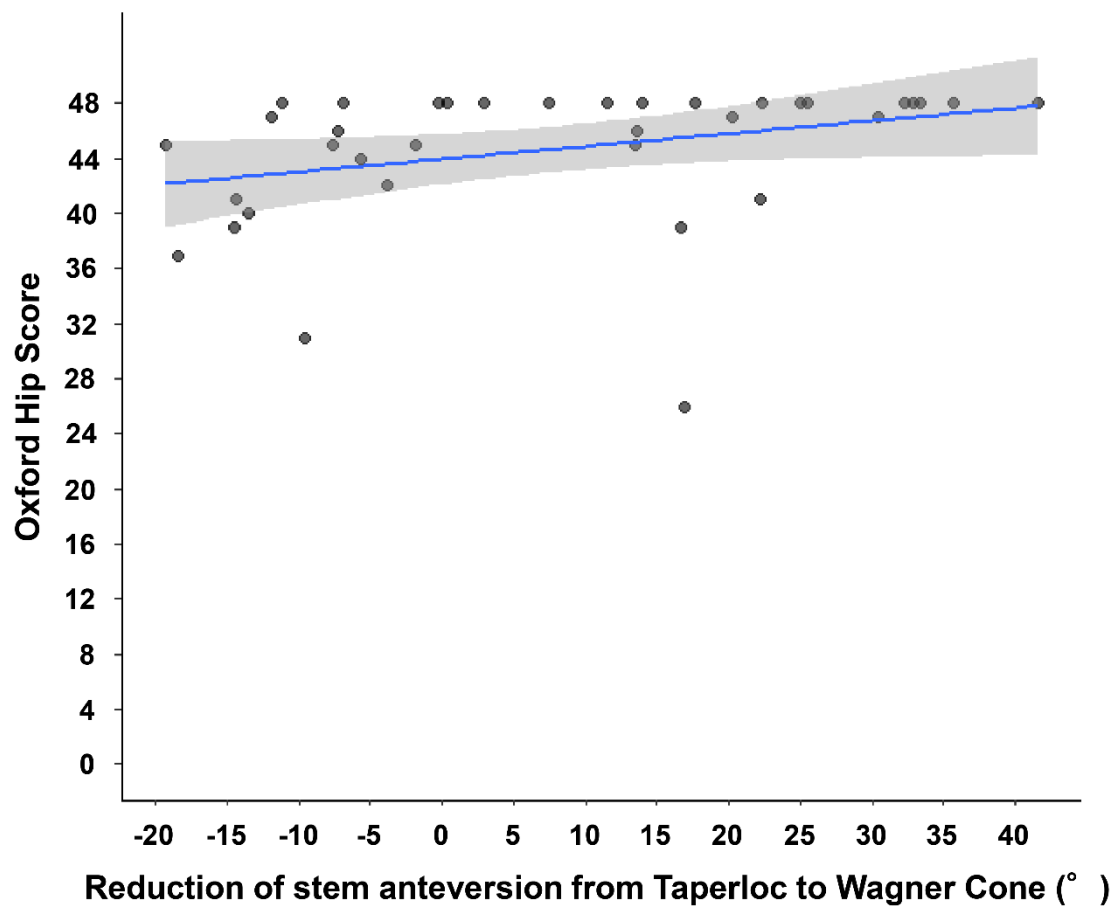
**Fig b.** Kaplan-Meier survivorship curve and 95% CI. The endpoint was revision. Patients lost to follow-up (including death) were censored at the date of last contact, and those who underwent revision were censored at the time of dislocation.



**Fig c.** Scatter plot, linear regression line, and 95% CI illustrating the association between reduction of stem anteversion from Taperloc to Wagner Cone (Zimmer Biomet, USA), and the visual analogue scale (VAS) pain are shown.



**Fig d.** Scatter plot, linear regression line, and 95% CI illustrating the association between reduction of stem anteversion from Taperloc to Wagner Cone (Zimmer Biomet, USA), and the visual analogue scale (VAS) satisfaction are shown.



**Fig e.** Scatter plot, linear regression line, and 95% CI illustrating the association between reduction of stem anteversion from Taperloc to Wagner Cone (Zimmer Biomet, USA), and the Oxford Hip Score are shown.