



Supplementary Material

10.1302/2633-1462.38.BJO2022-0096.R1

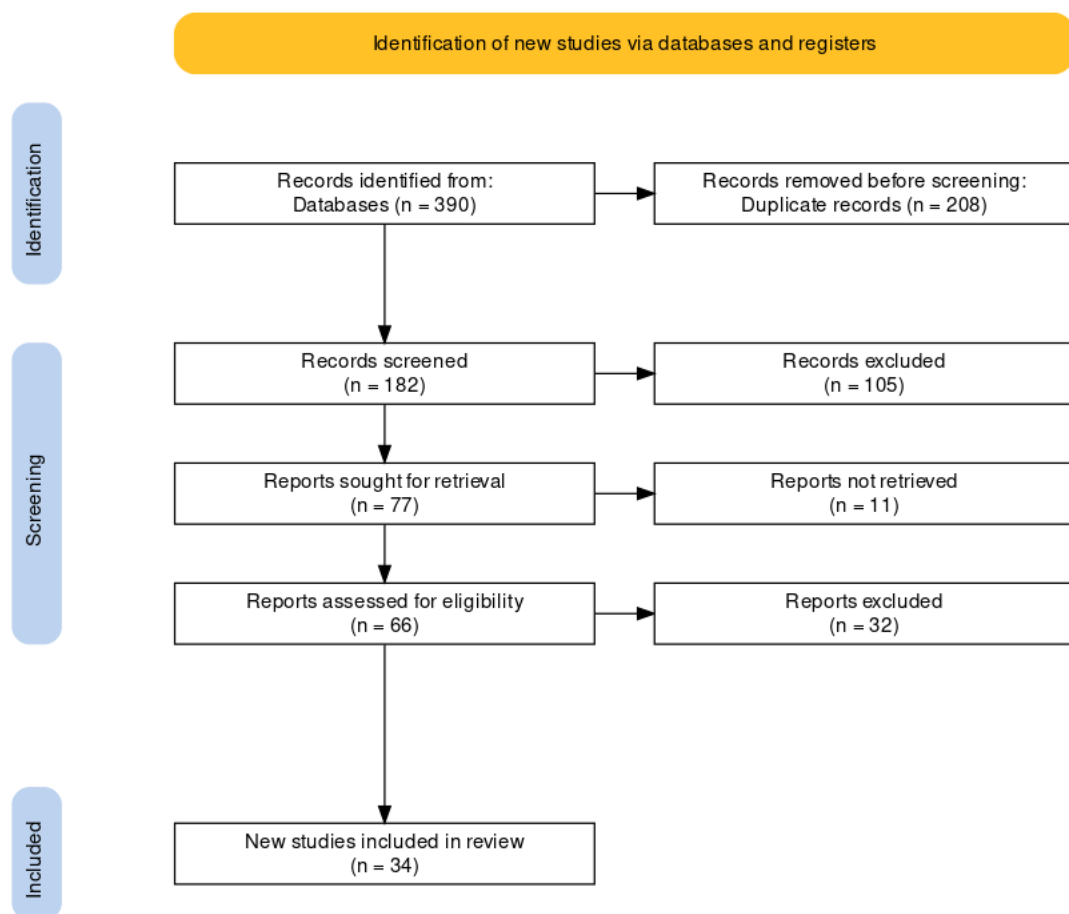


Figure a. Preferred Reporting Items for Systematic Reviews and Meta-Analyses flow diagram.

Table i. Study characteristics.

Author	Design	Grade	Country	Patients, n	Mean age, yrs	Injuries, n	Fractures, %	Most frequent fracture
Austin Public Health 2019 ¹	Retrospective	Good	USA	190		363	35.3	Upper and lower extremity
Badeau 2019 ²	Retrospective	Good	USA	50	34	79	36	
Brownson 2019 ³	Retrospective	Good	New Zealand	180		221	41.7	Upper extremity
Kobayashi 2019 ⁴	Retrospective	Good	USA	103	37.1	111	41.7	Face
Mayhew 2019 ⁵	Retrospective	Fair	New Zealand	63		88		Upper extremity
Mitchell 2019 ⁶	Retrospective	Fair	New Zealand	54		68	29.6	Upper extremity
Trivedi 2019 ⁷	Retrospective	Good	USA	249		333	31.7	
Alwani 2020 ⁸	Retrospective	Good	USA	89	29	150	36.0	Upper extremity
Bauer 2020 ⁹	Retrospective	Fair	USA	61	336	130	70.5	Head and neck
Beck 2020 ¹⁰	Retrospective	Fair	New Zealand	54		56	31.5	Upper extremity
Bekhit 2020 ¹¹	Retrospective	Good	New Zealand	246	31.1	242	29.3	
Dhillon 2020 ¹²	Retrospective	Good	USA	87	35.1	93	57.4	Face
English 2020 ¹³	Retrospective	Fair	USA	124	30*	251	67.7	Upper extremity
Faraji 2020 ¹⁴	Retrospective	Fair	USA	203	36*	477	84.2	
Ishmael 2020 ¹⁵	Retrospective	Good	USA	73	35.4	75	93.2	Lower extremity
Nellamattathil 2020 ¹⁶	Retrospective	Fair	USA	54		24	25..9	Upper extremity
Puzio 2020 ¹⁷	Retrospective	Good	USA	92	30	132	24	Upper extremity
Siow 2020 ¹⁸	Retrospective	Good	USA	485	37.1	279	49.3	Upper extremity
Stormann 2020 ¹⁹	Retrospective	Fair	Germany	76	34.2	87	48.6	Upper extremity
Bloom 2021 ²⁰	Retrospective	Good	USA	248	35.8	527	21.4	Radius
Cicchino 2021 ²¹	Prospective	Good	USA	105	39.5	179		

Coelho 2021 ²²	Prospective	Good	Spain	397	30.8	422	46.9	Radius
GencYavuz 2021 ²³	Retrospective	Fair	Turkey	70	22.8	117	30.0	Face
Harbrecht 2021 ²⁴	Prospective	Good	Germany	59	30.0	99	40.7	Upper extremity
Heuer 2021 ²⁵	Prospective	Good	Germany	90	35.6	85	35.6	Upper extremity
Kim 2021 ²⁶	Retrospective	Good	Korea	125	31.4	172	12.8	Face
Kleinertz 2021 ²⁷	Retrospective	Good	Germany	89	33.9	122	16	Head and neck
Lavoie-Gagne 2021 ²⁸	Retrospective	Good	USA	442		356	46.6	Upper extremity
Moftakhar 2021 ²⁹	Retrospective	Good	Austria	175	34.4	327	35.3	Upper extremity
Mukhtar 2021 ³⁰	Retrospective	Good	USA	192	28*	198		
Nielsen 2021 ³¹	Prospective	Good	Denmark	49	26*	57	26.5	Upper extremity
Shichman 2021 ³²	Retrospective	Good	Israel	563	33.9	716	100	Upper extremity
Shiffler 2021 ³³	Retrospective	Good	USA	165	33.7	181	68.5	Face
Uluk 2021 ³⁴	Prospective	Good	Germany	248	29*	235	32.3	Lower extremity

*Median age.

Table ii. Facial fracture location.

<i>Fracture location</i>	<i>n (%)</i>	<i>Studies, n</i>
<i>Frontal sinus</i>	28 (8.0)	5
<i>Parietal</i>	3 (0.9)	1
<i>Occipital</i>	6 (1.7)	5
<i>Temporal</i>	9 (2.6)	3
<i>Zygomatic</i>	33 (9.5)	5
<i>Maxillary</i>	96 (27.6)	5
<i>Nasal</i>	53 (15.2)	5
<i>Orbit</i>	62 (17.8)	4
<i>Mandible</i>	41 (11.8)	5
<i>Sphenoid</i>	9 (2.6)	1
<i>Other</i>	8 (2.3)	3

References

1. No authors listed. Dockless electric scooter-related injuries. Austin Public Health. 2019. APH_Dockless_Electric_Scooter_Study_5-2-19.pdf (date last accessed 3 August 2022).
2. **Badeau A, Carman C, Newman M, et al.** Emergency department visits for electric scooter-related injuries after introduction of an urban rental program. *Am J Emerg Med.* 2019;37:1531–1533.
3. **Brownson AB, Fagan PV, Dickson S, et al.** Electric scooter injuries at Auckland City Hospital. *N Z Med J.* 2019;132:62–72.
4. **Kobayashi LM, Williams E, Brown CV, et al.** The e-merging e-pidemic of e-scooters. *Trauma Surg Acute Care Open.* 2019;4:e000337.
5. **Mayhew LJ, Bergin C.** Impact of e-scooter injuries on Emergency Department imaging. *J Med Imaging Radiat Oncol.* 2019;63:461–466.
6. **Mitchell G, Tsao H, Randell T, et al.** Impact of electric scooters to a tertiary emergency department: 8-week review after implementation of a scooter share scheme. *Emerg Med Australas EMA.* 2019;31:930–934.
7. **Trivedi TK, Liu C, Antonio ALM, et al.** Injuries associated with standing electric scooter use. *JAMA Netw Open.* 2019;2:e187381–e187381.
8. **Alwani M, Jones AJ, Sandelski M, et al.** Facing facts: facial injuries from stand-up electric scooters. *Cureus.* 12:e6663.
9. **Bauer F, Riley JD, Lewandowski K, Najafi K, Kepros J.** Traumatic injuries associated with standing motorized scooters. *JAMA Netw Open.* 2020;3(3):e201925.
10. **Beck S, Barker L, Chan A, et al.** Emergency department impact following the introduction of an electric scooter sharing service. *Emerg Med Australas EMA.* 2020;32:409–415.
11. **Bekhit MNZ, Le Fevre J, Bergin CJ.** Regional healthcare costs and burden of injury associated with electric scooters. *Injury.* 2020;51:271–277.
12. **Dhillon NK, Juillard C, Barmparas G, et al.** Electric scooter injury in Southern California trauma centers. *J Am Coll Surg.* 2020;231:133–138.
13. **English KC, Allen JR, Rix K, et al.** The characteristics of dockless electric rental scooter-related injuries in a large U.S. city. *Traffic Inj Prev.* 2020;21:476–481.
14. **Faraji F, Lee JH, Faraji F, et al.** Electric scooter craniofacial trauma. *Laryngoscope Investig Otolaryngol.* 2020;5:390–395.
15. **Ishmael CR, Hsiue PP, Zoller SD, et al.** An early look at operative orthopaedic injuries associated with electric scooter accidents: bringing high-energy trauma to a wider audience. *JBJS.* 2020;102:e18.
16. **Nellamattathil M, Amber I.** An evaluation of scooter injury and injury patterns following widespread adoption of E-scooters in a major metropolitan area. *Clin Imaging.* 2020;60:200–203.
17. **Puzio TJ, Murphy PB, Gazzetta J, et al.** The electric scooter: A surging new mode of transportation that comes with risk to riders. *Traffic Inj Prev.* 2020;21:175–178.

18. **Siow MY, Lavoie-Gagne O, Politzer CS, et al.** Electric scooter orthopaedic injury demographics at an urban level I trauma center. *J Orthop Trauma*. 2020;34:e424.
19. **Störmann P, Klug A, Nau C, et al.** Characteristics and injury patterns in electric-scooter related accidents—a prospective two-center report from Germany. *J Clin Med*. 2020;9:1569.
20. **Bloom MB, Noorzad A, Lin C, et al.** Standing electric scooter injuries: impact on a community. *Am J Surg*. 2021;221:227–232.
21. **Cicchino JB, Kulie PE, McCarthy ML.** Severity of e-scooter rider injuries associated with trip characteristics. *J Safety Res*. 2021;76:256–261.
22. **Coelho A, Feito P, Corominas L, et al.** Electric scooter-related injuries: a new epidemic in orthopedics. *J Clin Med*. 2021;10:3283.
23. **Genc Yavuz B, Zengin Temel T, Satilmis D, et al.** Analysis of electric scooter injuries admitted to the emergency service. *Ir J Med Sci 1971 -*. 2021.
24. **Harbrecht A, Hackl M, Leschinger T, et al.** What to expect? Injury patterns of electric-scooter accidents over a period of one year - a prospective monocentric study at a level 1 trauma center. *Eur J Orthop Surg Traumatol*. 2021:1–7.
25. **Heuer S, Landschoof S, Kornherr P, et al.** Epidemiology and injury pattern of e-scooter injuries - initial results. *Z Orthopadie Unfallchirurgie*. 2021.
26. **Kim M, Lee S, Ko DR, et al.** Craniofacial and dental injuries associated with stand-up electric scooters. *Dent Traumatol*. 2021;37:229–233.
27. **Kleinertz H, Ntalos D, Hennes F, et al.** accident mechanisms and injury patterns in e-scooter users. *Dtsch Arztebl Int*. 2021;118:117–121.
28. **Lavoie-Gagne O, Siow M, Harkin WE, et al.** Financial impact of electric scooters: a review of injuries over 27 months at an urban level 1 trauma center (cost of e-scooter injuries at an urban level 1 trauma center). *Trauma Surg Acute Care Open*. 2021;6:e000634.
29. **Moftakhar T, Wanzel M, Vojcsik A, et al.** Incidence and severity of electric scooter related injuries after introduction of an urban rental programme in Vienna: a retrospective multicentre study. *Arch Orthop Trauma Surg*. 2021;141:1207–1213.
30. **Mukhtar M, Ashraf A, Frank MS, et al.** Injury incidence and patterns associated with electric scooter accidents in a major metropolitan city. *Clin Imaging*. 2021;74:163–168.
31. **Nielsen KI, Nielsen FE, Rasmussen SW.** Injuries following accidents with electric scooters. *Dan Med J*. 2021;68:A09200697.
32. **Shichman I, Shaked O, Factor S, et al.** Epidemiology of fractures sustained during electric scooter accidents: a retrospective review of 563 cases. *JBJS*. 2021;103:1125–1131.
33. **Shiffler K, Mancini K, Wilson M, et al.** Intoxication is a significant risk factor for severe craniomaxillofacial injuries in standing electric scooter accidents. *J Oral Maxillofac Surg*. 2021;79:1084–1090.
34. **Uluk D, Lindner T, Dahne M, et al.** E-scooter incidents in Berlin: an evaluation of risk factors and injury patterns. *Emerg Med J*. 2021.