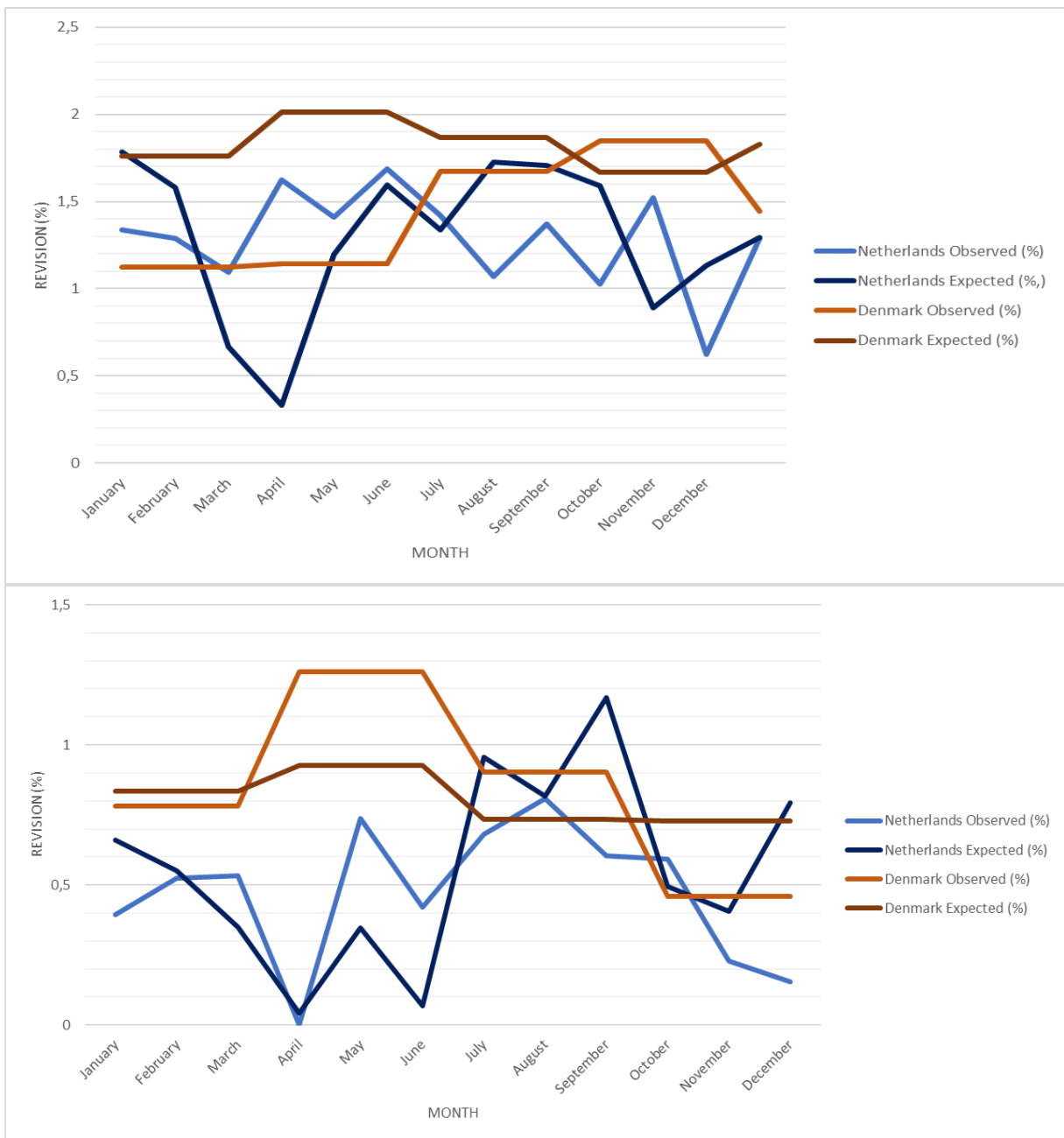
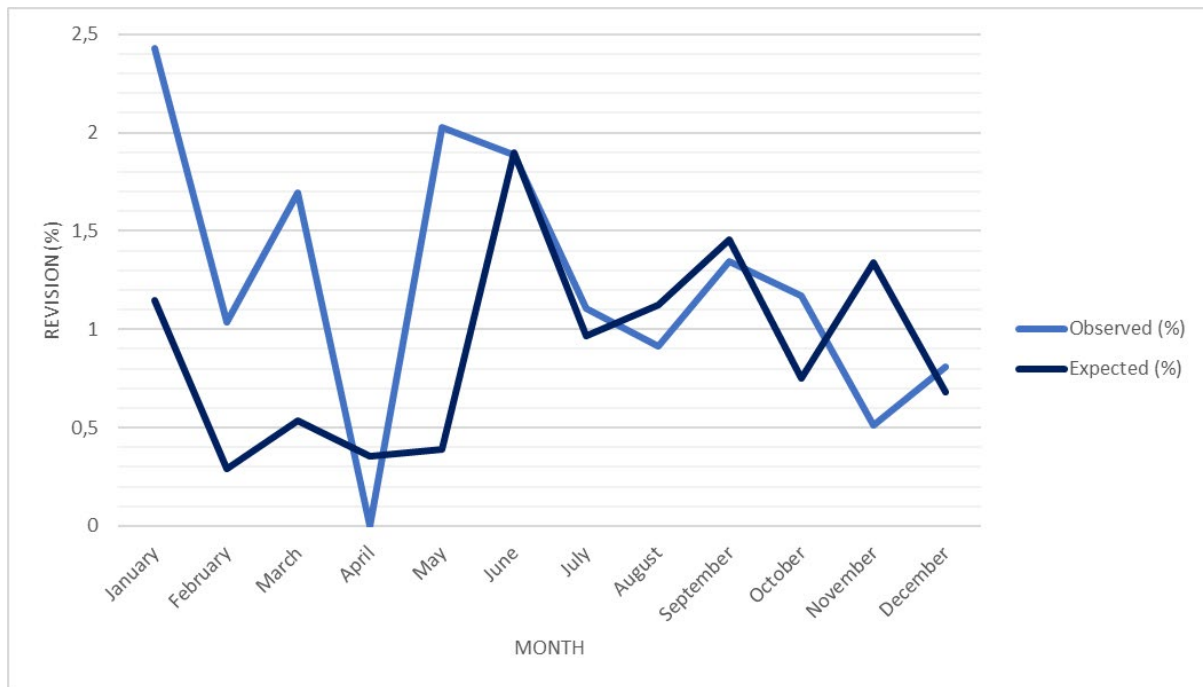




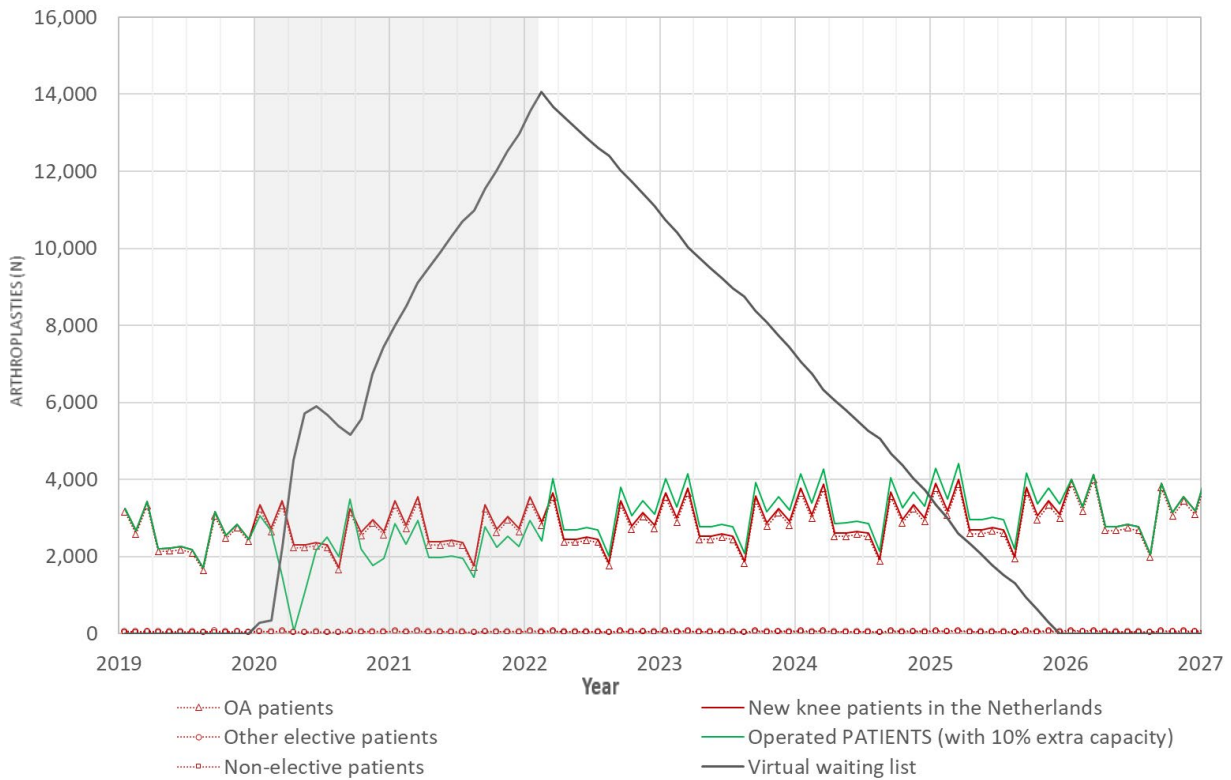
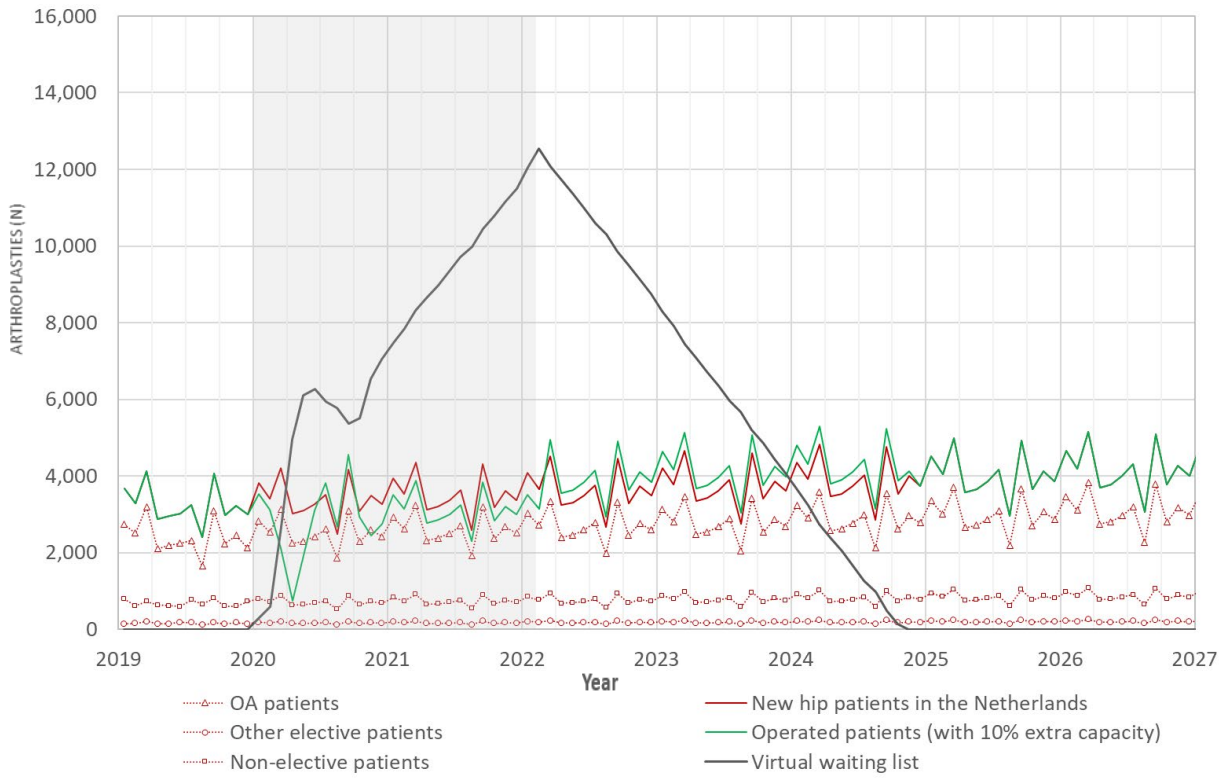
## Supplementary Material

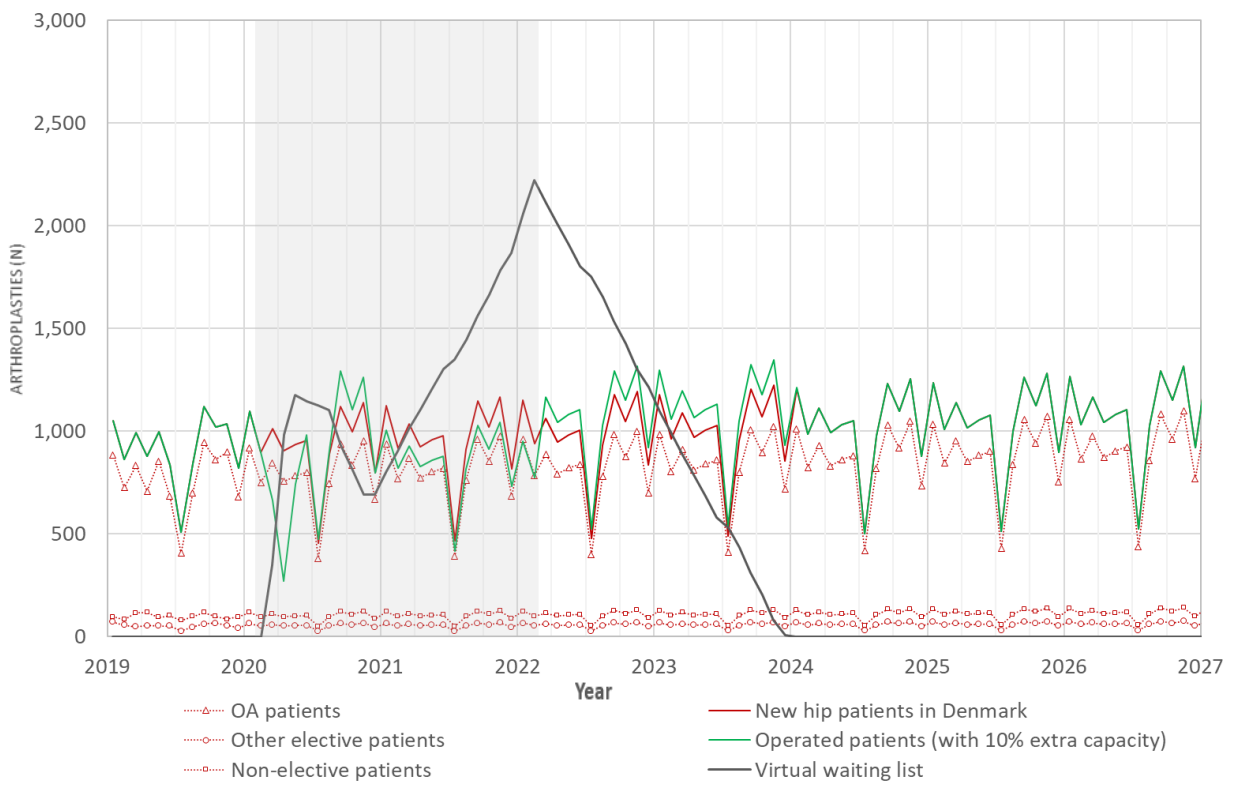
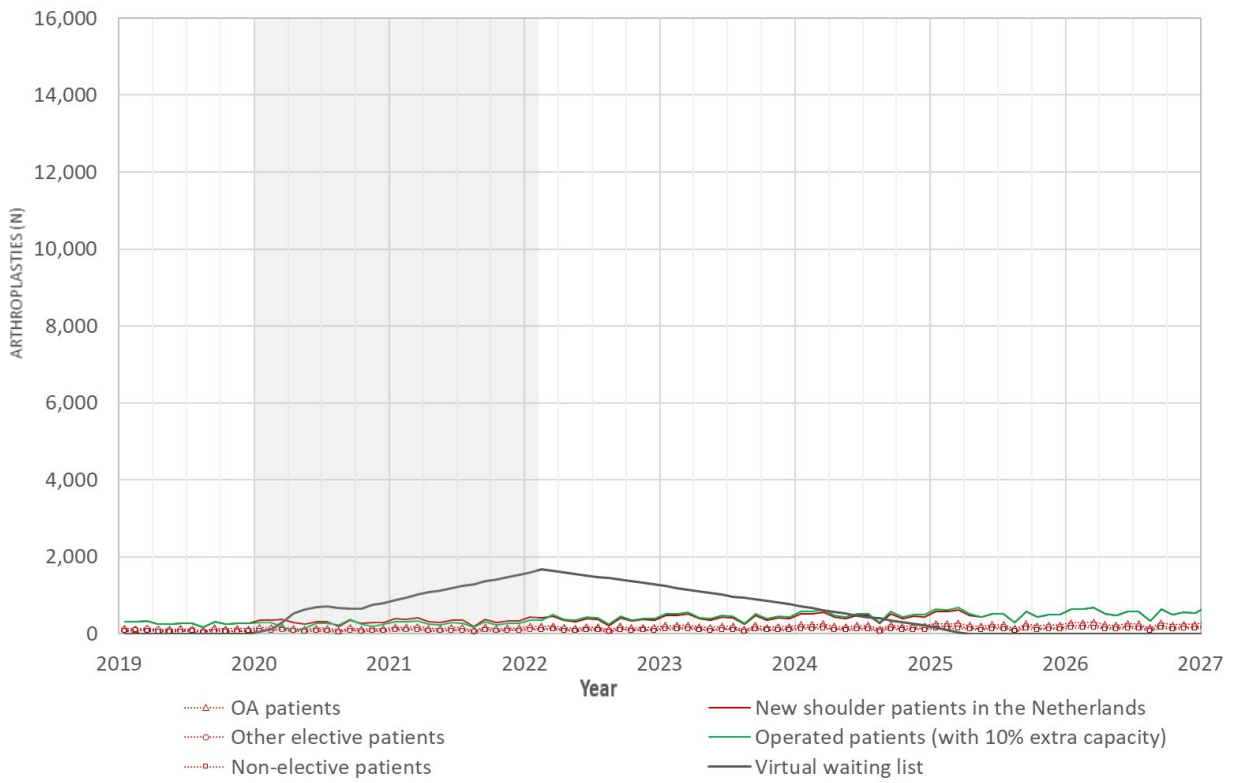
10.1302/2633-1462.312.BJO-2022-0111.R1

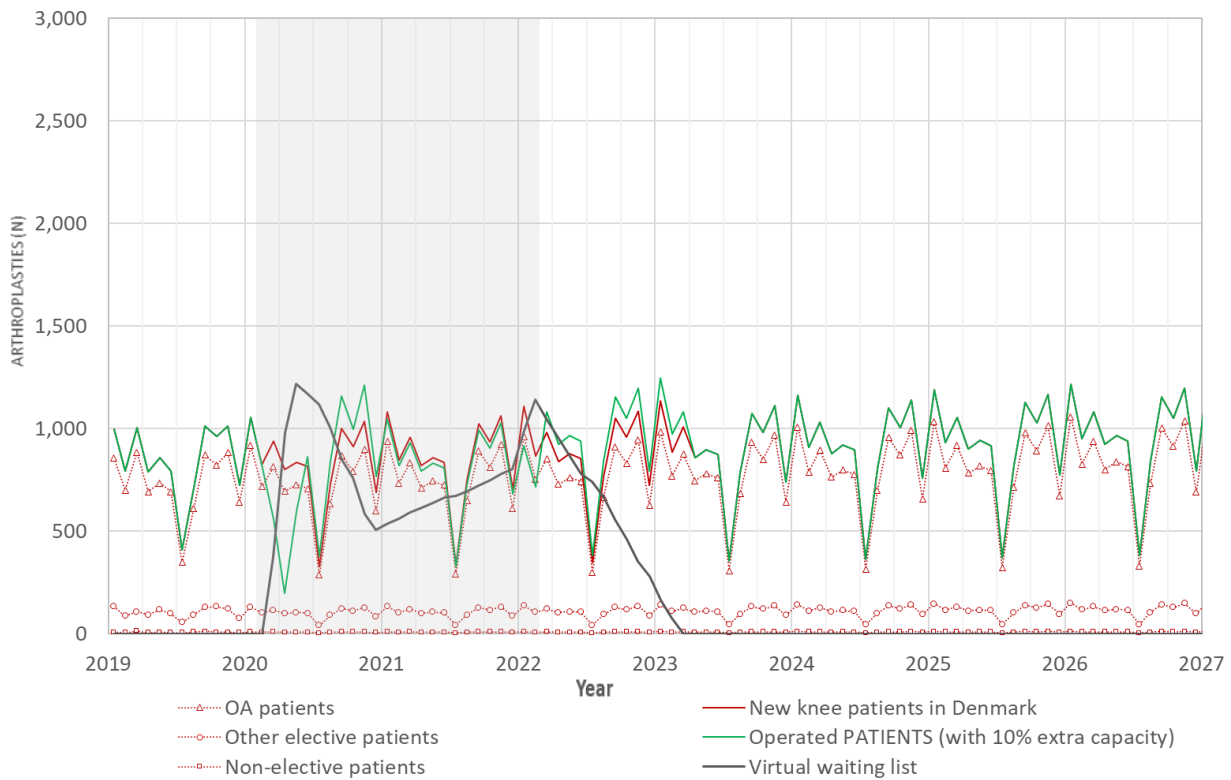




**Fig a.** a) Observed/expected ratios of proportions of revision hip arthroplasties within three months in 2020 in the Netherlands and Denmark. b) Observed/expected ratios of proportions of revision knee arthroplasties within three months in 2020 in the Netherlands and Denmark. c) Observed/expected ratios of proportions of revision shoulder arthroplasties within three months in 2020 in the Netherlands.







**Fig b.** a) Virtual waiting list for the Dutch hip population, including operated and arriving numbers of patients by indication. b) Virtual waiting list for the Dutch knee population, including operated and arriving numbers of patients by indication. c) Virtual waiting list for the Dutch shoulder population, including operated and arriving numbers of patients by indication. d) Virtual waiting list for the Danish hip population, including operated and arriving numbers of patients by indication. e) Virtual waiting list for the Danish knee population, including operated and arriving numbers of patients by indication. OA, osteoarthritis.



A	11,796	1,054	989 (39.0)	525 (40.9)	47 (50.0)	447 (40.9)	907 (40.3)	1,119	793 (42.5)	1,392	867 (41.0)	710 (42.4)	770 (42.6)
B	(40.9)	(40.5)	1,319 (57.2)	714 (55.6)	45 (47.9)	610 (55.8)	1,256	(40.8)	1,006	(40.9)	1,174	914 (54.6)	976 (54.0)
C	16,034	1,450	80 (3.5)	38 (3.0)	-	31 (2.8)	(55.8)	1,512	(53.9)	1,902	(55.5)	35 (2.1)	44 (2.4)
Missing	(55.6)	(55.8)	7 (0.3)	8 (0.6)	2 (2.1)	6 (0.5)	72 (3.2)	(55.2)	53 (2.8)	(55.8)	55 (2.6)	16 (1.0)	19 (1.1)
	846 (2.9)	80 (3.1)					16 (0.7)	90 (3.3)	14 (0.8)	84 (2.5)	19 (0.9)		
	156 (0.5)	16 (0.6)						21 (0.8)		26 (0.8)			
<b>Type of hospital, n (%)</b>													
Public	25,350 (87.9)	2,285 (87.9)	2,014 (87.4)	1,124 (87.5)	82 (87.2)	887 (81.1)	1,891 (84.0)	2,271 (82.8)	1,581 (84.7)	2,899 (85.2)	1,691 (80.0)	1,183 (70.6)	1,410 (77.9)
Private	3,482 (12.1)	315 (12.1)	290 (12.6)	161 (12.5)	12 (12.8)	207 (18.9)	360 (16.0)	471 (17.2)	285 (15.3)	505 (14.8)	424 (20.0)	492 (29.4)	399 (22.1)
<b>Fixation, n (%)</b>													
Cemented	6,159 (21.4)	526 (20.2)	462 (20.0)	257 (20.0)	14 (14.9)	161 (14.7)	443 (19.6)	545 (19.9)	383 (20.6)	679 (20.0)	381 (18.0)	284 (17.0)	315 (17.4)
Uncemented	19,988 (69.3)	1,820 (70.0)	1,599 (69.4)	905 (70.4)	71 (75.5)	835 (76.3)	1,590 (70.6)	1,930 (70.4)	1,308 (70.1)	2,380 (69.9)	1,564 (73.9)	1,264 (75.5)	1,352 (74.7)
Hybrid	2,678 (9.3)	254 (9.8)	243 (10.6)	123 (9.6)	9 (9.5)	97 (9.0)	218 (9.8)	267 (9.7)	175 (9.3)	345 (10.1)	170 (8.1)	127 (7.5)	142 (7.9)
<b>Mean EQ-5D (SD)</b>	0.529 (0.192)	0.530 (0.193)	0.519 (0.194)	0.528 (0.192)	0.456 (0.215)	0.515 (0.219)	0.525 (0.195)	0.524 (0.208)	0.517 (0.212)	0.521 (0.208)	0.533 (0.222)	0.528 (0.228)	0.509 (0.237)

ASA, American Society of Anesthesiologists; EQ-5D; EuroQoL five-dimension questionnaire; SD, standard deviation.

**Table ii.** Elective primary hip arthroplasty for osteoarthritis in Denmark: patient and prosthesis characteristics.

Characteristic	2019 (n = 9,166)	2020 January (n = 1,404)	February (n = 1,400)	March (n = 1,626)	April (n = 1,102)	May (n = 1,409)	June (n = 1,471)	July (n = 490)	August (n = 973)	September (n = 1,444)	October (n = 944)	November (n = 1,076)	December (n = 672)
<b>Age, n (%)</b>													
< 40	40 (0.4)	8 (0.6)	6 (0.4)	Masked	Masked	5 (0.4)	Masked	5 (1.0)	7 (0.7)	6 (0.4)	< 5 (.)	7 (0.7)	< 5 (.)
40 to 45	81 (0.9)	17 (1.2)	Masked	10 (0.6)	10 (0.9)	8 (0.6)	11 (0.7)	0 (0.0)	11 (1.1)	13 (0.9)	< 5 (.)	6 (0.6)	9 (1.3)
45 to 50	231 (2.5)	36 (2.6)	38 (2.7)	42 (2.6)	27 (2.5)	27 (1.9)	39 (2.7)	8 (1.6)	22 (2.3)	27 (1.9)	31 (3.3)	23 (2.1)	24 (3.6)
50 to 55	472 (5.1)	87 (6.2)	75 (5.4)	93 (5.7)	63 (5.7)	76 (5.4)	79 (5.4)	26 (5.3)	51 (5.2)	67 (4.6)	52 (5.5)	51 (4.7)	45 (6.7)
55 to 60	755 (8.2)	116 (8.3)	126 (9.0)	160 (9.8)	104 (9.4)	121 (8.6)	129 (8.8)	40 (8.2)	97 (10.0)	120 (8.3)	68 (7.2)	68 (6.3)	64 (9.5)
60 to 65	1,015 (11.1)	183 (13.0)	154 (11.0)	184 (11.3)	130 (11.8)	156 (11.1)	161 (10.9)	55 (11.2)	104 (10.7)	144 (10.0)	104 (11.0)	151 (14.0)	66 (9.8)
65 to 70	1,466 (16.0)	220 (15.7)	222 (15.9)	258 (15.9)	172 (15.6)	217 (15.4)	205 (13.9)	81 (16.5)	142 (14.6)	224 (15.5)	166 (17.6)	181 (16.8)	110 (16.4)
70 to 75	2,040 (22.3)	297 (21.2)	300 (21.4)	328 (20.2)	220 (20.0)	308 (21.9)	306 (20.8)	93 (19.0)	215 (22.1)	290 (20.1)	196 (20.8)	222 (20.6)	142 (21.1)
75 to 80	1,674 (18.3)	241 (17.2)	262 (18.7)	316 (19.4)	201 (18.2)	252 (17.9)	289 (19.6)	98 (20.0)	180 (18.5)	316 (21.9)	171 (18.1)	193 (17.9)	120 (17.9)
80 to 85	1,006 (11.0)	131 (9.3)	136 (9.7)	156 (9.6)	119 (10.8)	163 (11.6)	167 (11.4)	61 (12.4)	106 (10.9)	164 (11.4)	103 (10.9)	125 (11.6)	52 (7.7)
85 to 90	315 (3.4)	62 (4.4)	54 (3.9)	54 (3.3)	47 (4.3)	63 (4.5)	67 (4.6)	18 (3.7)	33 (3.4)	63 (4.4)	36 (3.8)	41 (3.8)	31 (4.6)
90 to 95	61 (0.7)	6 (0.4)	12 (0.9)	12 (0.7)	8 (0.7)	13 (0.9)	6 (0.4)	< 5 (.)	5 (0.5)	10 (0.7)	9 (1.0)	8 (0.7)	< 5 (.)
95 to 100	10 (0.1)	0 (0.0)	< 5 (.)	< 5 (.)	< 5 (.)	-	< 5 (.)	< 5 (.)	0 (0.0)	0 (0.0)	< 5 (.)	0 (0.0)	< 5 (.)
100 to 105	-	-	-	-	-	-	-	-	-	-	-	-	-
≥ 105	-	-	-	-	-	-	-	-	-	-	-	-	-
<b>Female, n (%)</b>	5,101 (55.7)	757 (53.9)	771 (55.1)	922 (56.7)	605 (54.9)	782 (55.5)	860 (58.5)	279 (56.9)	534 (54.9)	822 (56.9)	528 (55.9)	588 (54.6)	352 (52.4)
<b>BMI, n (%)</b>													
Underweight	79 (0.9)	10 (0.7)	11 (0.8)	16 (1.0)	Masked	15 (1.1)	13 (0.9)	< 5 (.)	8 (0.8)	13 (0.9)	10 (1.1)	Masked	< 5 (.)
Normal weight	2,787 (30.4)	424 (30.2)	456 (32.6)	540 (33.2)	345 (31.3)	397 (28.2)	429 (29.2)	157 (32.0)	272 (28.0)	428 (29.6)	331 (35.1)	342 (31.8)	209 (31.1)
Overweight	3,562 (38.9)	564 (40.2)	554 (39.6)	603 (37.1)	463 (42.0)	585 (41.5)	588 (40.0)	187 (38.2)	379 (39.0)	556 (38.5)	318 (33.7)	453 (42.1)	295 (43.9)
Obese	2,196 (24.0)	352 (25.1)	325 (23.2)	422 (26.0)	261 (23.7)	360 (25.6)	377 (25.6)	128 (26.1)	269 (27.6)	380 (26.3)	234 (24.8)	240 (22.3)	151 (22.5)
Morbidly obese	219 (2.4)	22 (1.6)	27 (1.9)	31 (1.9)	22 (2.0)	27 (1.9)	40 (2.7)	8 (1.6)	19 (2.0)	35 (2.4)	19 (2.0)	24 (2.2)	12 (1.8)
Missing	323 (3.5)	32 (2.3)	27 (1.9)	14 (0.9)	< 5 (.)	25 (1.8)	24 (1.6)	Masked	26 (2.7)	32 (2.2)	32 (3.4)	< 5 (.)	< 5 (.)
<b>ASA, n (%)</b>													
I	1,589 (18.9)	241 (18.2)	232 (17.3)	295 (18.4)	174 (15.9)	249 (18.1)	244 (16.9)	62 (13.0)	168 (17.9)	232 (16.7)	184 (20.2)	204 (19.1)	129 (19.4)
II	5,324 (63.3)	852 (64.3)	868 (64.6)	1,037 (64.7)	724 (66.3)	848 (61.6)	906 (62.9)	296 (62.2)	602 (64.0)	904 (64.9)	565 (62.0)	677 (63.4)	418 (62.8)
III-IV	1,493 (17.8)	233 (17.6)	244 (18.2)	271 (16.9)	194 (17.8)	279 (20.3)	290 (20.1)	118 (24.8)	171 (18.2)	257 (18.4)	162 (17.8)	187 (17.5)	119 (17.9)
<b>Charnley classification, n (%)</b>													
A	5,516 (60.2)	857 (61.0)	851 (60.8)	950 (58.4)	648 (58.8)	834 (59.2)	883 (60.0)	297 (60.6)	589 (60.5)	883 (61.1)	579 (61.3)	669 (62.2)	431 (64.1)
	3,573 (39.0)	538 (38.3)	538 (38.4)	670 (41.2)	449 (40.7)	567 (40.2)	Masked	186 (38.0)	Masked	547 (37.9)	547 (37.9)	401 (37.3)	236 (35.1)



B C Missing	Masked < 5 (.)	Masked < 5 (.)	11 (0.8) 0 (0.0)	6 (0.4) 0 (0.0)	5 (0.5) 0 (0.0)	Masked < 5 (.)	< 5 (.) 0 (0.0)	7 (1.4) 0 (0.0)	< 5 (.) 0 (0.0)	Masked < 5 (.)	Masked < 5 (.)	6 (0.6) 0 (0.0)	< 5 (.) < 5 (.)
<b>Type of hospital, n (%)</b>													
Public	8,142 (88.8)	1,110 (79.1)	1,086 (77.6)	1,257(77.3)	858 (77.9)	1,184(84.0)	1,249 (84.9)	332 (67.8)	693 (71.2)	1,107 (76.7)	752 (79.7)	872 (81.0)	514 (76.5)
Private	1,024 (11.2)	294 (20.9)	314 (22.4)	369 (22.7)	244 (22.1)	225 (16.0)	222 (15.1)	158 (32.2)	280 (28.8)	337 (23.3)	192 (20.3)	204 (19.0)	158 (23.5)
<b>Fixation, n (%)</b>													
Cemented	565 (6.2)	101 (7.2)	85 (6.1)	108 (6.6)	Masked	106 (7.5)	104 (7.1)	55 (11.2)	54 (5.5)	116 (8.0)	57 (6.0)	55 (5.1)	Masked
Uncemented	6,505 (71.0)	1,031 (73.4)	1,035 (73.9)	1,174 (72.2)	763 (69.2)	985 (69.9)	1,036 (70.4)	354 (72.2)	692 (71.1)	998 (69.1)	694 (73.5)	796 (74.0)	502 (74.7)
Hybrid	1,916 (20.9)	267 (19.0)	273 (19.5)	333 (20.5)	243 (22.1)	306 (21.7)	312 (21.2)	75 (15.3)	210 (21.6)	318 (22.0)	171 (18.1)	220 (20.4)	131 (19.5)

ASA, American Society of Anesthesiologists.



Cemented	542 (28.7)	41 (25.2)	56 (36.6)	21 (24.7)	12 (34.3)	40 (30.3)	45 (28.7)	51 (25.4)	39 (31.2)	59 (25.8)	33 (28.2)	37 (29.6)	42 (29.6)
Uncemented	1,081	94 (57.7)	77 (50.3)	43 (50.6)	16 (45.7)	73 (55.3)	90 (57.3)	118 (58.7)	60 (48.0)	124 (54.1)	70 (59.8)	64 (51.2)	78 (54.9)
Hybrid	(57.2)	28 (17.2)	20 (13.1)	21 (24.7)	7 (20.0)	19 (14.4)	21 (13.4)	32 (15.9)	26 (20.8)	46 (20.1)	14 (12.0)	24 (19.2)	22 (15.5)
	264 (14.0)												
<b>Mean EQ-5D (SD)</b>	0.541 (0.206)	-	-	-	-	0.417 (0.117)	0.568 (0.225)	0.421 (0.201)	-	0.476 (0.217)	0.403 (0.092)	0.663	0.360

ASA, American Society of Anesthesiologists; EQ-5D, EuroQoL-five-dimension questionnaire; SD, standard deviation.

**Table iv.** Elective primary hip arthroplasty for other elective indications in Denmark: patient and prosthesis characteristics.

Characteristic	2019 (n = 877)	2020 January (n = 152)	February (n = 126)	March (n = 161)	April (n = 100)	May (n = 152)	June (n = 152)	July (n = 61)	August (n = 99)	September (n = 134)	October (n = 85)	November (n = 109)	December (n = 60)
<b>Age, n (%)</b>													
< 40	128 (14.6)	12 (7.9)	18 (14.3)	16 (9.9)	17 (17.0)	11 (7.2)	24 (15.8)	< 5 (.)	16 (16.2)	15 (11.2)	9 (10.6)	11 (10.1)	< 5 (.)
40 to 45	65 (7.4)	13 (8.6)	11 (8.7)	12 (7.5)	< 5 (.)	11 (7.2)	5 (3.3)	< 5 (.)	< 5 (.)	6 (4.5)	7 (8.2)	12 (11.0)	5 (8.3)
45 to 50	114 (13.0)	17 (11.2)	21 (16.7)	20 (12.4)	11 (11.0)	17 (11.2)	20 (13.2)	11 (18.0)	7 (7.1)	20 (14.9)	9 (10.6)	13 (11.9)	7 (11.7)
50 to 55	106 (12.1)	24 (15.8)	19 (15.1)	24 (14.9)	21 (21.0)	26 (17.1)	16 (10.5)	12 (19.7)	10 (10.1)	20 (14.9)	12 (14.1)	17 (15.6)	10 (16.7)
55 to 60	102 (11.6)	19 (12.5)	10 (7.9)	22 (13.7)	8 (8.0)	15 (9.9)	19 (12.5)	7 (11.5)	14 (14.1)	21 (15.7)	17 (20.0)	15 (13.8)	14 (23.3)
60 to 65	93 (10.6)	15 (9.9)	11 (8.7)	14 (8.7)	12 (12.0)	17 (11.2)	9 (5.9)	< 5 (.)	11 (11.1)	17 (12.7)	6 (7.1)	13 (11.9)	< 5 (.)
65 to 70	72 (8.2)	17 (11.2)	9 (7.1)	14 (8.7)	12 (12.0)	19 (12.5)	15 (9.9)	< 5 (.)	9 (9.1)	12 (9.0)	6 (7.1)	< 5 (.)	5 (8.3)
70 to 75	82 (9.4)	15 (9.9)	10 (7.9)	13 (8.1)	< 5 (.)	19 (12.5)	16 (10.5)	8 (13.1)	14 (14.1)	11 (8.2)	7 (8.2)	8 (7.3)	< 5 (.)
75 to 80	65 (7.4)	12 (7.9)	9 (7.1)	10 (6.2)	5 (5.0)	8 (5.3)	13 (8.6)	8 (13.1)	7 (7.1)	5 (3.7)	< 5 (.)	< 5 (.)	< 5 (.)
80 to 85	36 (4.1)	8 (5.3)	< 5 (.)	Masked	6 (6.0)	5 (3.3)	11 (7.2)	< 5 (.)	< 5 (.)	< 5 (.)	5 (5.9)	7 (6.4)	< 5 (.)
85 to 90	Masked	0 (0.0)	< 5 (.)	< 5 (.)	< 5 (.)	< 5 (.)	< 5 (.)	< 5 (.)	< 5 (.)	5 (3.7)	< 5 (.)	< 5 (.)	< 5 (.)
90 to 95	< 5 (.)	0 (0.0)	< 5 (.)	< 5 (.)	0 (0.0)	< 5 (.)	< 5 (.)	0 (0.0)	< 5 (.)	< 5 (.)	< 5 (.)	< 5 (.)	0 (0.0)
95 to 100	0 (0.0)	0 (0.0)	0 (0.0)	0 (0.0)	0 (0.0)	0 (0.0)	0 (0.0)	0 (0.0)	< 5 (.)	0 (0.0)	0 (0.0)	0 (0.0)	0 (0.0)
100 to 105	-	-	-	-	-	-	-	-	-	-	-	-	-
≥ 105	-	-	-	-	-	-	-	-	-	-	-	-	-
<b>Female, n (%)</b>	493 (56.2)	89 (58.6)	70 (55.6)	104 (64.6)	60 (60.0)	83 (54.6)	88 (57.9)	27 (44.3)	55 (55.6)	78 (58.2)	40 (47.1)	62 (56.9)	37 (61.7)
<b>BMI, n (%)</b>													
Underweight	13 (1.5)	< 5 (.)	5 (4.0)	< 5 (.)	< 5 (.)	0 (0.0)	< 5 (.)	< 5 (.)	< 5 (.)	< 5 (.)	0 (0.0)	< 5 (.)	< 5 (.)
Normal weight	288 (32.8)	57 (37.5)	44 (34.9)	54 (33.5)	32 (32.0)	51 (33.6)	55 (36.2)	16 (26.2)	38 (38.4)	48 (35.8)	31 (36.5)	43 (39.4)	13 (21.7)
Overweight	264 (30.1)	50 (32.9)	45 (35.7)	61 (37.9)	40 (40.0)	57 (37.5)	52 (34.2)	21 (34.4)	32 (32.3)	40 (29.9)	27 (31.8)	31 (28.4)	18 (30.0)
Obese	182 (20.8)	35 (23.0)	27 (21.4)	29 (18.0)	21 (21.0)	32 (21.1)	35 (23.0)	17 (27.9)	18 (18.2)	30 (22.4)	18 (21.2)	24 (22.0)	19 (31.7)
Morbidly obese	21 (2.4)	< 5 (.)	0 (0.0)	6 (3.7)	< 5 (.)	< 5 (.)	< 5 (.)	< 5 (.)	< 5 (.)	6 (4.5)	< 5 (.)	< 5 (.)	< 5 (.)
Missing	109 (12.4)	5 (3.3)	5 (4.0)	Masked	5 (5.0)	9 (5.9)	6 (3.9)	5 (8.2)	7 (7.1)	Masked	Masked	8 (7.3)	7 (11.7)
<b>ASA, n (%)</b>													
I	261 (35.4)	51 (35.2)	45 (38.1)	58 (37.7)	42 (45.2)	45 (31.5)	42 (28.8)	13 (22.8)	33 (35.9)	51 (40.2)	30 (38.5)	38 (37.3)	20 (37.0)
II	341 (46.3)	69 (47.6)	54 (45.8)	62 (40.3)	34 (36.6)	68 (47.6)	67 (45.9)	32 (56.1)	40 (43.5)	57 (44.9)	34 (43.6)	46 (45.1)	23 (42.6)
III-IV	135 (18.3)	25 (17.2)	19 (16.1)	34 (22.1)	17 (18.3)	30 (21.0)	37 (25.3)	12 (21.1)	19 (20.7)	19 (15.0)	14 (17.9)	18 (17.6)	11 (20.4)
<b>Type of hospital, n (%)</b>													
Public	746 (85.1)	114 (75.0)	95 (75.4)	121 (75.2)	79 (79.0)	130 (85.5)	120 (78.9)	43 (70.5)	77 (77.8)	102 (76.1)	61 (71.8)	84 (77.1)	43 (71.7)
Private	131 (14.9)	38 (25.0)	31 (24.6)	40 (24.8)	21 (21.0)	22 (14.5)	32 (21.1)	18 (29.5)	22 (22.2)	32 (23.9)	24 (28.2)	25 (22.9)	17 (28.3)

<b>Fixation, n (%)</b>	95 (10.8)	Masked	9 (7.1)	17 (10.6)	10 (10.0)	14 (9.2)	18 (11.8)	6 (9.8)	7 (7.1)	<5 (.)	8 (9.4)	13 (11.9)	8 (13.3)
Cemented	644 (73.4)	123 (80.9)	101 (80.2)	117 (72.7)	78 (78.0)	115 (75.7)	113 (74.3)	46 (75.4)	73 (73.7)	113 (84.3)	69 (81.2)	83 (76.1)	40 (66.7)
Uncemented	118 (13.5)	21 (13.8)	16 (12.7)	Masked	12 (12.0)	Masked	Masked	9 (14.8)	Masked	13 (9.7)	Masked	Masked	Masked
Hybrid													

ASA, American Society of Anesthesiologists.

**Table v.** Acute primary hip arthroplasty indications in the Netherlands: patient and prosthesis characteristics.

Characteristic	2019 (n = 8,127)	2020 January (n = 756)	February (n = 653)	March (n = 727)	April (n = 598)	May (n = 681)	June (n = 652)	July (n = 828)	August (n = 631)	September (n = 863)	October (n = 662)	November (n = 599)	December (n = 766)
<b>Age, n (%)</b>													
< 40	30 (0.4)	5 (0.7)	2 (0.3)	1 (0.1)	3 (0.5)	2 (0.3)	-	4 (0.5)	2 (0.3)	1 (0.1)	2 (0.3)	1 (0.2)	5 (0.7)
40 to 45	23 (0.3)	5 (0.7)	3 (0.5)	3 (0.4)	-	1 (0.1)	3 (0.5)	1 (0.1)	2 (0.3)	4 (0.5)	4 (0.6)	3 (0.5)	2 (0.3)
45 to 50	62 (0.8)	15 (2.0)	2 (0.3)	5 (0.7)	4 (0.7)	5 (0.7)	2 (0.3)	7 (0.8)	8 (1.3)	2 (0.2)	4 (0.6)	2 (0.3)	3 (0.4)
50 to 55	115 (1.4)	25 (3.3)	6 (0.9)	13 (1.8)	8 (1.3)	4 (0.6)	5 (0.8)	11 (1.3)	7 (1.1)	16 (1.9)	7 (1.1)	7 (1.2)	13 (1.7)
55 to 60	230 (2.8)	38 (5.0)	11 (1.7)	17 (2.3)	14 (2.3)	20 (2.9)	23 (3.5)	28 (3.4)	16 (2.5)	30 (3.5)	18 (2.7)	18 (3.0)	20 (2.6)
60 to 65	433 (5.3)	53 (7.0)	39 (6.0)	31 (4.3)	25 (4.2)	29 (4.3)	44 (6.7)	39 (4.7)	31 (4.9)	43 (5.0)	25 (3.8)	36 (6.0)	36 (4.7)
65 to 70	708 (8.7)	103 (13.6)	48 (7.4)	48 (6.6)	60 (10.0)	53 (7.8)	49 (7.5)	84 (10.1)	49 (7.8)	76 (8.8)	53 (8.0)	50 (8.3)	51 (6.7)
70 to 75	1,081 (13.3)	100 (13.2)	75 (11.5)	93 (12.8)	84 (14.0)	101 (14.8)	100 (15.3)	117 (14.1)	82 (13.0)	131 (15.2)	83 (12.5)	101 (16.9)	118 (15.4)
75 to 80	1,304 (16.0)	149 (19.7)	113 (17.3)	112 (15.4)	99 (16.6)	96 (14.1)	96 (14.7)	125 (15.1)	122 (19.3)	135 (15.6)	103 (15.6)	94 (15.7)	119 (15.5)
80 to 85	1,614 (19.9)	146 (19.3)	139 (21.3)	162 (22.3)	119 (19.9)	162 (23.8)	133 (20.4)	170 (20.5)	136 (21.6)	175 (20.3)	142 (21.5)	115 (19.2)	151 (19.7)
85 to 90	1,490 (18.3)	89 (11.8)	128 (19.6)	141 (19.4)	126 (21.1)	125 (18.4)	124 (19.0)	143 (17.3)	108 (17.1)	145 (16.8)	134 (20.2)	108 (18.0)	144 (18.8)
90 to 95	837 (10.3)	26 (3.4)	65 (10.0)	90 (12.4)	43 (7.2)	68 (10.0)	56 (8.6)	77 (9.3)	53 (8.4)	78 (9.0)	69 (10.4)	46 (7.7)	77 (10.1)
95 to 100	186 (2.3)	2 (0.3)	21 (3.2)	11 (1.5)	13 (2.2)	13 (1.9)	15 (2.3)	21 (2.5)	15 (2.4)	23 (2.7)	18 (2.7)	16 (2.7)	22 (2.9)
100 to 105	14 (0.2)	-	1 (0.2)	-	-	2 (0.3)	2 (0.3)	1 (0.1)	-	4 (0.5)	-	2 (0.3)	5 (0.7)
≥ 105	-	-	-	-	-	-	-	-	-	-	-	-	-
<b>Female, n (%)</b>	5,407 (66.5)	481 (63.6)	437 (66.9)	456 (62.7)	375 (62.7)	405 (59.5)	413 (63.3)	556 (67.1)	396 (62.8)	537 (62.2)	438 (66.2)	383 (63.9)	501 (65.4)
<b>BMI, n (%)</b>													
Underweight	360 (4.4)	29 (3.8)	29 (4.4)	22 (3.0)	28 (4.7)	19 (2.8)	28 (4.3)	32 (3.9)	28 (4.4)	39 (4.5)	20 (3.0)	27 (4.5)	30 (3.9)
Normal weight	3,905 (48.0)	371 (49.1)	310 (47.5)	344 (47.3)	290 (48.5)	339 (49.8)	310 (47.5)	401 (48.4)	315 (49.9)	423 (49.0)	356 (53.8)	278 (46.4)	361 (47.1)
Overweight	2,378 (29.3)	213 (28.2)	188 (28.8)	215 (29.6)	161 (26.9)	203 (29.8)	199 (30.5)	249 (30.1)	152 (24.1)	239 (27.7)	165 (24.9)	192 (32.1)	221 (28.9)
Obese	741 (9.1)	52 (6.9)	41 (6.3)	65 (8.9)	43 (7.2)	53 (7.8)	47 (7.2)	66 (8.0)	63 (10.0)	69 (8.0)	57 (8.6)	48 (8.0)	60 (7.8)
Morbidly obese	30 (0.4)	2 (0.3)	4 (0.6)	3 (0.4)	1 (0.2)	3 (0.4)	1 (0.2)	4 (0.5)	3 (0.5)	6 (0.7)	2 (0.3)	2 (0.3)	5 (0.7)
Missing	713 (8.8)	89 (11.8)	81 (12.4)	78 (10.7)	75 (12.5)	64 (9.4)	67 (10.3)	76 (9.2)	70 (11.1)	87 (10.1)	62 (9.4)	52 (8.7)	89 (11.5)
<b>ASA, n (%)</b>													
I	373 (4.6)	27 (3.6)	31 (4.7)	27 (3.7)	34 (5.7)	35 (5.1)	28 (4.3)	41 (5.0)	37 (5.9)	36 (4.2)	35 (5.3)	32 (5.3)	39 (5.1)
II	2,925 (36.0)	272 (36.0)	229 (35.1)	218 (30.8)	200 (33.4)	220 (23.3)	232 (35.6)	321 (38.8)	209 (33.1)	324 (37.5)	208 (31.4)	225 (37.6)	246 (32.1)
III-IV	4,825 (59.4)	455 (60.2)	391 (59.9)	479 (65.9)	364 (60.9)	425 (62.4)	391 (60.0)	463 (55.9)	382 (60.5)	500 (57.9)	417 (63.0)	341 (56.9)	478 (62.4)
<b>Type of hospital, n (%)</b>													
Public	8,094 (99.6)	753 (99.6)	649 (99.4)	725 (99.7)	597 (99.8)	677 (99.4)	648 (99.4)	822 (99.3)	630 (99.8)	857 (99.3)	661 (99.8)	592 (98.8)	763 (99.6)
Private	33 (0.4)	3 (0.4)	4 (0.6)	2 (0.3)	1 (0.2)	4 (0.6)	4 (0.6)	6 (0.7)	1 (0.2)	6 (0.7)	1 (0.2)	7 (1.2)	3 (0.4)

<b>Fixation, n (%)</b>	5,449 (67.0)	491 (64.9)	430 (65.8)	496 (68.2)	406 (67.9)	455 (66.8)	442 (67.8)	545 (65.8)	435 (68.9)	578 (67.0)	471 (71.1)	420 (70.1)	544 (71.0)
Cemented	2,128 (26.2)	204 (27.00)	174 (26.6)	175 (24.1)	147 (24.6)	175 (25.7)	151 (23.2)	208 (25.1)	147 (23.3)	205 (23.8)	142 (21.5)	137 (22.9)	177 (23.1)
Uncemented	544 (6.7)	54 (7.1)	35 (5.4)	42 (5.8)	35 (5.9)	35 (5.1)	47 (7.2)	61 (7.4)	41 (6.5)	68 (7.9)	37 (5.6)	41 (6.8)	45 (5.9)
Hybrid													
<b>Mean EQ-5D (SD)</b>	0.396 (0.246)	-	0.420	-	0.541 (0.105)	0.575 (0.102)	0.577 (0.067)	0.323 (0.150)	0.653 (0.129)	0.135 (0.254)	0.428 (0.274)	0.572 (0.245)	0.506 (0.035)

ASA, American Society of Anesthesiologists; EQ-5D; EuroQoL five-dimension questionnaire; SD, standard deviation.

**Table vi.** Acute primary hip arthroplasty indications in Denmark: patient and prosthesis characteristics.

Characteristic	2019 (n = 1,009)	2020 January (n = 172)	February (n = 154)	March (n = 174)	April (n = 152)	May (n = 175)	June (n = 185)	July (n = 141)	August (n = 150)	September (n = 121)	October (n = 83)	November (n = 88)	December (n = 74)
<b>Age, n (%)</b>													
< 40	12 (1.2)	< 5 (.)	< 5 (.)	< 5 (.)	< 5 (.)	< 5 (.)	Masked	< 5 (.)	< 5 (.)	0 (0.0)	< 5 (.)	< 5 (.)	< 5 (.)
40 to 45	9 (0.9)	< 5 (.)	< 5 (.)	< 5 (.)	< 5 (.)	0 (0.0)	0 (0.0)	0 (0.0)	< 5 (.)	< 5 (.)	0 (0.0)	0 (0.0)	0 (0.0)
45 to 50	15 (1.5)	< 5 (.)	5 (3.2)	5 (2.9)	< 5 (.)	< 5 (.)	< 5 (.)	< 5 (.)	< 5 (.)	< 5 (.)	0 (0.0)	< 5 (.)	< 5 (.)
50 to 55	38 (3.8)	11 (6.4)	6 (3.9)	6 (3.4)	5 (3.3)	5 (2.9)	7 (3.8)	5 (3.5)	5 (3.3)	0 (0.0)	0 (0.0)	< 5 (.)	< 5 (.)
55 to 60	71 (7.0)	13 (7.6)	9 (5.8)	12 (6.9)	6 (3.9)	13 (7.4)	15 (8.1)	10 (7.1)	11 (7.3)	7 (5.8)	< 5 (.)	5 (5.7)	< 5 (.)
60 to 65	Masked	16 (9.3)	12 (7.8)	14 (8.0)	10 (6.6)	15 (8.6)	12 (6.5)	12 (8.5)	7 (4.7)	15 (12.4)	9 (10.8)	8 (9.1)	< 5 (.)
65 to 70	134 (13.3)	28 (16.3)	19 (12.3)	21 (12.1)	18 (11.8)	24 (13.7)	20 (10.8)	18 (12.8)	23 (15.3)	17 (14.0)	12 (14.5)	12 (13.6)	8 (10.8)
70 to 75	155 (15.4)	21 (12.2)	28 (18.2)	21 (12.1)	19 (12.5)	23 (13.1)	28 (15.1)	25 (17.7)	17 (11.3)	17 (14.0)	8 (9.6)	12 (13.6)	13 (17.6)
75 to 80	136 (13.5)	22 (12.8)	20 (13.0)	35 (20.1)	24 (15.8)	24 (13.7)	29 (15.7)	20 (14.2)	27 (18.0)	20 (16.5)	14 (16.9)	13 (14.8)	9 (12.2)
80 to 85	150 (14.9)	25 (14.5)	16 (10.4)	16 (9.2)	24 (15.8)	27 (15.4)	34 (18.4)	15 (10.6)	27 (18.0)	15 (12.4)	8 (9.6)	11 (12.5)	12 (16.2)
85 to 90	103 (10.2)	16 (9.3)	22 (14.3)	19 (10.9)	17 (11.2)	18 (10.3)	14 (7.6)	18 (12.8)	18 (12.0)	17 (14.0)	12 (14.5)	13 (14.8)	10 (13.5)
90 to 95	Masked	10 (5.8)	11 (7.1)	15 (8.6)	18 (11.8)	16 (9.1)	13 (7.0)	12 (8.5)	6 (4.0)	7 (5.8)	10 (12.0)	8 (9.1)	< 5 (.)
95 to 100	19 (1.9)	< 5 (.)	< 5 (.)	< 5 (.)	5 (3.3)	5 (2.9)	5 (2.7)	< 5 (.)	< 5 (.)	< 5 (.)	< 5 (.)	< 5 (.)	< 5 (.)
100 to 105	< 5 (.)	< 5 (.)	0 (0.0)	< 5 (.)	0 (0.0)	< 5 (.)	0 (0.0)	0 (0.0)	0 (0.0)	0 (0.0)	0 (0.0)	0 (0.0)	0 (0.0)
≥ 105	-	-	-	-	-	-	-	-	-	-	-	-	-
Female, n (%)	620 (61.4)	105 (61.0)	93 (60.4)	100 (57.5)	101 (66.4)	107 (61.1)	115 (62.2)	93 (66.0)	97 (64.7)	77 (63.6)	52 (62.7)	59 (67.0)	46 (62.2)
<b>BMI, n (%)</b>													
Underweight	57 (5.6)	6 (3.5)	13 (8.4)	20 (11.5)	10 (6.6)	14 (8.0)	9 (4.9)	15 (10.6)	10 (6.7)	Masked	Masked	Masked	Masked
Normal weight	498 (49.4)	80 (46.5)	78 (50.6)	90 (51.7)	76 (50.0)	90 (51.4)	104 (56.2)	59 (41.8)	78 (52.0)	63 (52.1)	43 (51.8)	42 (47.7)	34 (45.9)
Overweight	286 (28.3)	53 (30.8)	40 (26.0)	40 (23.0)	45 (29.6)	51 (29.1)		40 (28.4)	43 (28.7)	35 (28.9)	18 (21.7)	29 (33.0)	24 (32.4)
Obese	96 (9.5)	25 (14.5)	18 (11.7)	17 (9.8)	17 (11.2)	14 (8.0)	44 (23.8)	19 (13.5)	16 (10.7)	15 (12.4)	11 (13.3)	10 (11.4)	6 (8.1)
Morbidly obese	5 (0.5)	Masked	0 (0.0)	< 5 (.)	< 5 (.)	< 5 (.)	20 (10.8)	< 5 (.)	< 5 (.)	0 (0.0)	0 (0.0)	< 5 (.)	0 (0.0)
Missing	67 (6.6)	< 5 (.)	5 (3.2)	< 5 (.)	< 5 (.)	< 5 (.)	< 5 (.)	Masked	< 5 (.)	< 5 (.)	< 5 (.)	0 (0.0)	< 5 (.)
<b>ASA, n (%)</b>													
I	88 (9.4)	23 (13.5)	10 (6.6)	13 (7.5)	7 (4.7)	12 (7.0)	12 (6.7)	5 (3.7)	9 (6.0)	7 (5.8)	6 (7.5)	< 5 (.)	< 5 (.)
II	420 (44.8)	79 (46.2)	77 (50.7)	66 (37.9)	67 (44.7)	86 (50.0)	85 (47.2)	68 (50.4)	72 (48.3)	55 (45.5)	40 (50.0)	42 (47.7)	33 (44.6)
III-IV	429 (45.8)	69 (40.4)	65 (42.8)	95 (54.6)	76 (50.7)	74 (43.0)	83 (46.1)	62 (45.9)	68 (45.6)	59 (48.8)	34 (42.5)	Masked	Masked
<b>Type of hospital, n (%)</b>													
Public	985 (97.6)	167 (97.1)	146 (94.8)	168 (96.6)	Masked	Masked	Masked	Masked	Masked	Masked	Masked	Masked	Masked
Private	24 (2.4)	5 (2.9)	8 (5.2)	6 (3.4)	< 5 (.)	< 5 (.)	< 5 (.)	< 5 (.)	< 5 (.)	< 5 (.)	< 5 (.)	< 5 (.)	< 5 (.)
<b>Fixation, n (%)</b>													
Cemented	151 (15.0)	26 (15.1)	25 (16.2)	19 (10.9)	22 (14.5)	Masked	38 (20.5)	34 (24.1)	37 (24.7)	25 (20.7)	Masked	12 (13.6)	Masked
Uncemented	318 (31.5)	54 (31.4)	55 (35.7)	56 (32.2)	38 (25.0)	42 (24.0)	51 (27.6)	31 (22.0)	39 (26.0)	34 (28.1)	27 (32.5)	16 (18.2)	23 (31.1)



Hybrid	494 (49.0)	85 (49.4)	66 (42.9)	94 (54.0)	85 (55.9)	88 (50.3)	84 (45.4)	71 (50.4)	68 (45.3)	57 (47.1)	39 (47.0)	55 (62.5)	33 (44.6)
--------	------------	-----------	-----------	-----------	-----------	-----------	-----------	-----------	-----------	-----------	-----------	-----------	-----------

ASA, American Society of Anesthesiologists.

## Knee arthroplasty

**Table vii.** Elective primary knee arthroplasty for osteoarthritis in the Netherlands: patient and prosthesis characteristics.

Characteristic	2019 (n = 29,873)	2020 January (n = 2,949)	February (n = 2,571)	March (n = 1,448)	April (n = 56)	May (n = 1,038)	June (n = 2,061)	July (n = 2,411)	August (n = 1,910)	September (n = 3,371)	October (n = 2,128)	November (n = 1,689)	December (n = 1,895)
<b>Age, n (%)</b>													
< 40	23 (0.1)	1 (0.0)	1 (0.0)	-	-	-	1 (0.0)	1 (0.0)	1 (0.1)	3 (0.1)	2 (0.1)	1 (0.1)	1 (0.1)
40 to 45	71 (0.2)	8 (0.3)	9 (0.4)	5 (0.3)	-	6 (0.6)	3 (0.1)	6 (0.2)	1 (0.1)	7 (0.2)	4 (0.2)	4 (0.2)	4 (0.2)
45 to 50	419 (1.4)	36 (1.2)	36 (1.4)	22 (1.5)	1 (1.8)	17 (1.6)	31 (1.5)	38 (1.6)	31 (1.6)	46 (1.4)	33 (1.6)	21 (1.2)	23 (1.2)
50 to 55	1,480 (5.0)	157 (5.3)	135 (5.3)	81 (5.6)	9 (16.1)	60 (5.8)	98 (4.8)	143 (5.9)	96 (5.0)	166 (4.9)	103 (4.8)	100 (5.9)	95 (5.0)
55 to 60	3,011 (10.1)	307 (10.4)	250 (9.7)	144 (9.9)	9 (16.1)	135 (13.0)	222 (10.8)	248 (10.3)	181 (9.5)	391 (11.6)	241 (11.3)	193 (11.4)	200 (10.6)
60 to 65	4,605 (15.4)	452 (15.3)	378 (14.7)	244 (16.9)	13 (23.2)	167 (16.1)	307 (14.9)	343 (14.2)	344 (18.0)	512 (15.2)	354 (16.6)	296 (17.5)	321 (16.9)
65 to 70	5,878 (19.7)	596 (20.2)	501 (19.5)	278 (19.2)	10 (17.9)	230 (22.2)	390 (18.9)	464 (19.2)	340 (17.8)	651 (19.3)	445 (20.9)	343 (20.3)	379 (20.0)
70 to 75	6,586 (22.0)	652 (22.1)	610 (23.7)	335 (23.1)	8 (14.3)	189 (18.2)	464 (22.5)	512 (21.2)	405 (21.2)	740 (22.0)	487 (22.9)	382 (22.6)	440 (23.2)
75 to 80	4,721 (15.8)	475 (16.1)	392 (15.2)	203 (14.0)	4 (7.1)	144 (13.9)	339 (16.4)	401 (16.6)	304 (15.9)	509 (15.1)	257 (12.1)	228 (13.5)	286 (15.1)
80 to 85	2,424 (8.1)	207 (7.0)	202 (7.9)	106 (7.3)	2 (3.6)	62 (6.0)	157 (7.6)	202 (8.4)	167 (8.7)	259 (7.7)	158 (7.4)	96 (5.7)	105 (5.5)
85 to 90	588 (2.0)	54 (1.8)	52 (2.0)	25 (1.7)	-	26 (2.5)	40 (1.9)	44 (1.8)	37 (1.9)	81 (2.4)	41 (1.9)	25 (1.5)	35 (1.8)
90 to 95	59 (0.2)	4 (0.1)	4 (0.2)	5 (0.3)	-	2 (0.2)	7 (0.3)	99 (0.4)	3 (0.20)	6 (0.2)	3 (0.1)	-	6 (0.3)
95 to 100	7 (0.0)	-	1 (0.0)	-	-	-	1 (0.0)	-	-	-	-	-	-
100 to 105	-	-	-	-	-	-	1 (0.0)	-	-	-	-	-	-
≥ 105	1 (0.0)	-	-	-	-	-	-	-	-	-	-	-	-
Female, n (%)	18,512 (62.0)	1,805 (61.2)	1581 (61.5)	901 (62.2)	32 (57.1)	618 (59.5)	1,265 (61.4)	1,493 (61.9)	1,167 (61.1)	2,057 (61.0)	1,224(57.5 )	961 (56.9)	1,114 (58.8)
<b>BMI, n (%)</b>													
Underweight	36 (0.1)	-	4 (0.2)	2 (0.1)	-	5 (0.5)	2 (0.1)	1 (0.0)	5 (0.3)	3 (0.1)	3 (0.1)	-	1 (0.1)
Normal weight	5,051 (16.9)	493 (16.7)	434 (16.9)	246 (17.0)	13 (23.2)	168 (16.2)	348 (16.9)	429 (17.8)	347 (18.2)	597 (17.7)	420 (19.7)	328 (19.4)	372 (19.6)
Overweight	12,467 (41.7)	1,178 (39.9)	1047 (40.7)	595 (41.1)	25 (44.6)	436 (42.0)	833 (40.4)	977 (40.5)	780 (40.8)	1,340 (39.8)	852 (40.0)	758 (44.9)	788 (41.6)
Obese	11,338 (38.0)	1,133 (38.4)	970 (37.7)	533 (36.8)	17 (30.4)	392 (37.8)	792 (38.4)	894 (37.1)	677 (35.4)	1,283 (38.1)	714 (33.6)	543 (32.1)	678 (35.8)
Morbidly obese	943 (3.2)	1133 (38.4)	970 (37.7)	45 (3.1)	1 (1.8)	26 (2.5)	60 (2.9)	69 (2.9)	62 (3.2)	93 (2.8)	66 (3.1)	37 (2.2)	41 (2.2)
Missing	38 (0.1)	92 (3.1)	47 (1.8)	27 (1.9)	-	11 (1.1)	26 (1.3)	41 (1.7)	39 (2.0)	55 (1.6)	73 (3.4)	23 (1.4)	15 (0.8)
<b>ASA, n (%)</b>													
I	3,568 (11.9)	327 (11.1)	301 (11.7)	187 (12.9)	11 (19.6)	155 (14.9)	239 (11.6)	286 (11.9)	246 (12.9)	455 (13.5)	287 (13.5)	270 (16.0)	302 (15.9)
II	19,369 (64.8)	1933 (65.5)	1691 (65.8)	942 (65.1)	36 (64.3)	648 (62.4)	1,359 (65.9)	1,544 (64.0)	1,190 (62.3)	2,122 (62.9)	1,400 (65.8)	1,109 (65.7)	1,240 (65.4)
III-IV	6,931 (23.2)	688 (23.3)	578 (22.5)	318 (22.0)	9 (16.1)	235 (22.6)	462 (22.4)	580 (24.1)	471 (24.7)	792 (23.5)	439 (20.6)	307 (18.2)	347 (18.3)
<b>Charnley classification, n (%)</b>													
	11,868 (39.7)	1,145 (38.8)	952 (37.0)	574 (39.6)	27 (48.2)	448 (43.2)	815 (39.5)	924 (38.3)	742 (38.8)	1,301 (38.6)	794 (37.3)	648 (38.4)	774 (40.8)

A	17,893 (59.9)	1,721	1,542	838 (84.9)	28 (50.0)	554 (53.4)	1,189	1,405	1,092 (57.3)	1,936 (57.5)	1,268(59.6	986 (58.4)	1,044
B	112 (0.4)	(58.4)	(60.0)	31 (2.1)	-	33 (3.2)	(57.7)	(58.3)	60 (3.1)	112 (3.3)	)	47 (2.8)	(55.1)
C	-	70 (2.4)	65 (2.5)	5 (0.3)	1 (1.8)	3 (0.3)	53 (2.6)	68 (2.8)	16 (0.8)	22 (0.7)	52 (2.4)	8 (0.5)	63 (3.3)
Missing		13 (0.4)	12 (0.5)				4 (0.2)	14 (0.6)			14 (0.7)		14 (0.7)
<b>Type of hospital, n (%)</b>													
Public	25,196 (84.3)	2,480	2,129	1,192	38 (67.9)	807 (77.7)	1,635	1,957	1,521 (79.6)	2,809 (83.3)	1,616	1,173	1,330
Private	4,677 (15.7)	(84.1)	(82.8)	(82.3)	18 (32.1)	231 (22.3)	(79.3)	(81.2)	389 (20.4)	562 (16.7)	(75.9)	(69.4)	(70.2)
		469 (15.9)	442 (17.2)	256 (17.7)			426 (20.7)	454 (18.8)			512 (24.1)	516 (30.6)	565 (29.8)
<b>Fixation, n (%)</b>													
Cemented	25,185 (84.4)	2,494	2,199	1,200	53 (94.6)	845 (81.4)	1,716	1,995	1,600 (83.8)	2,765 (82.0)	1,738	1,334	1,497
Uncemented	3,722 (12.5)	(84.6)	(85.6)	(82.9)	2 (3.6)	156 (15.0)	(83.2)	(82.8)	259 (13.6)	485 (14.4)	(81.7)	(79.0)	(79.0)
Hybrid	966 (3.1)	376 (12.8)	315 (12.3)	197 (13.6)	1 (1.8)	37 (3.6)	278 (13.5)	350 (14.5)	49 (2.7)	119 (3.6)	324 (15.2)	297 (17.6)	330 (17.4)
		79 (2.6)	57 (5.1)	49 (3.5)			67 (3.3)	66 (2.7)			66 (3.1)	58 (3.4)	68 (3.6)
<b>Mean EQ-5D (SD)</b>	0.568 (0.183)	0.577	0.586	0.574	0.537	0.545	0.560	0.563	0.550	0.564	0.569	0.566	0.564
		(0.179)	(0.179)	(0.188)	(0.173)	(0.199)	(0.185)	(0.191)	(0.200)	(0.194)	(0.203)	(0.219)	(0.218)

ASA, American Society of Anesthesiologists; EQ-5D; EuroQoL five-dimension questionnaire; SD, standard deviation.





**Table ix.** Elective primary knee arthroplasty for other elective indications in the Netherlands: patient and prosthesis characteristics.

Characteristic	2019 (n = 582)	2020 January (n = 54)	February (n = 54)	March (n = 24)	April (n = 5)	May (n = 29)	June (n = 53)	July (n = 60)	August (n = 42)	September (n = 59)	October (n = 31)	November (n = 34)	December (n = 31)
<b>Age, n (%)</b>													
< 40	12 (2.1)	-	1 (1.9)	1 (4.2)	-	1 (3.4)	3 (5.7)	-	1 (2.4)	4 (6.8)	1 (3.2)	-	-
40 to 45	8 (1.4)	-	-	-	-	1 (3.4)	1 (1.9)	1 (1.7)	-	-	-	-	-
45 to 50	19 (3.3)	1 (1.9)	-	-	-	-	2 (3.8)	3 (5.0)	2 (4.8)	1 (1.7)	-	-	-
50 to 55	51 (8.8)	3 (5.6)	2 (3.7)	3 (12.5)	-	-	3 (5.7)	4 (6.7)	4 (9.5)	7 (11.9)	1 (3.2)	4 (11.8)	-
55 to 60	65 (11.2)	4 (7.4)	6 (11.1)	3 (12.5)	-	6 (20.7)	4 (7.5)	10 (16.7)	4 (9.5)	11 (18.6)	3 (9.7)	6 (17.6)	5 (16.1)
60 to 65	89 (15.3)	8 (14.8)	11 (20.4)	7 (29.2)	1 (20.0)	-	11 (20.8)	11 (18.3)	6 (14.3)	12 (20.3)	9 (29.0)	6 (17.6)	4 (12.9)
65 to 70	94 (16.2)	13 (24.1)	10 (18.5)	2 (8.3)	2 (40.0)	8 (27.6)	9 (17.0)	10 (16.7)	7 (16.7)	4 (6.8)	5 (16.1)	6 (17.6)	8 (25.8)
70 to 75	107 (18.4)	8 (14.8)	15 (27.8)	4 (16.7)	1 (20.0)	2 (6.6)	10 (18.9)	13 (21.7)	8 (19.0)	12 (20.3)	3 (9.7)	5 (14.7)	7 (22.6)
75 to 80	82 (14.1)	9 (16.7)	4 (7.4)	1 (4.2)	-	5 (17.2)	8 (15.1)	6 (10.0)	5 (11.9)	6 (10.2)	4 (12.9)	4 (11.8)	3 (9.7)
80 to 85	37 (6.4)	4 (7.4)	5 (9.3)	2 (8.3)	1 (20.0)	5 (17.2)	2 (3.8)	1 (1.7)	5 (11.9)	2 (3.4)	4 (12.9)	2 (5.9)	3 (9.7)
85 to 90	17 (2.9)	4 (7.4)	-	1 (4.2)	-	1 (3.4)	-	1 (1.7)	-	-	1 (3.2)	1 (2.9)	1 (3.2)
90 to 95	1 (0.2)	-	-	-	-	-	-	-	-	-	-	-	-
95 to 100	-	-	-	-	-	-	-	-	-	-	-	-	-
100 to 105	-	-	-	-	-	-	-	-	-	-	-	-	-
≥ 105	-	-	-	-	-	-	-	-	-	-	-	-	-
Female, yes (%)	408 (70.1)	37 (68.5)	40 (74.1)	17 (70.8)	4 (80.0)	15 (51.7)	34 (64.2)	44 (73.3)	34 (81.0)	44 (74.6)	15 (48.4)	21 (61.8)	22 (71.0)
<b>BMI, n (%)</b>													
Underweight	5 (0.9)	-	-	-	-	-	-	1 (1.7)	-	-	-	-	-
Normal weight	132 (22.7)	13 (24.1)	11 (20.4)	1 (4.2)	-	8 (27.6)	11 (20.8)	16 (26.7)	9 (21.4)	9 (15.3)	7 (22.6)	7 (20.6)	11 (35.5)
Overweight	230 (39.5)	21 (38.9)	20 (37.0)	10 (41.7)	3 (60.0)	14 (48.3)	21 (39.6)	17 (28.3)	17 (40.5)	30 (50.8)	12 (38.7)	14 (41.2)	12 (38.7)
Obese	12 (2.1)	-	3 (5.6)	1 (4.2)	-	5 (17.2)	3 (5.7)	2 (3.3)	1 (2.4)	3 (5.1)	1 (3.2)	-	-
Morbidly obese	2 (0.3)	1 (1.9)	3 (5.6)	2 (8.3)	-	2 (6.9)	3 (5.7)	2 (3.3)	-	-	2 (6.5)	1 (2.9)	1 (3.2)
Missing						-							
<b>ASA, n (%)</b>													
I	35 (6.0)	1 (1.9)	1 (1.9)	2 (8.3)	-	3 (10.3)	4 (7.5)	2 (3.3)	4 (9.5)	3 (5.1)	-	1 (2.9)	-
II	354 (60.8)	32 (59.3)	34 (63.0)	13 (54.2)	4 (80.0)	18 (62.1)	37 (69.8)	34 (56.7)	28 (66.7)	39 (66.1)	24 (77.4)	20 (58.8)	25 (80.6)
III-IV	193 (33.2)	21 (38.9)	19 (35.2)	9 (37.5)	1 (20.0)	8 (27.6)	12 (22.6)	24 (40.0)	10 (23.8)	17 (28.8)	7 (22.6)	13 (38.2)	6 (19.4)
<b>Type of hospital, n (%)</b>													
Public	540 (92.8)	51 (94.4)	51 (94.4)	23 (95.8)	3 (60.0)	27 (93.1)	49 (92.5)	58 (96.7)	37 (88.1)	56 (94.9)	24 (77.4)	31 (91.2)	29 (93.5)
	42 (7.2)	3 (5.6)	3 (5.6)	1 (4.2)	2 (40.0)		4 (7.5)	2 (3.3)	5 (11.9)	3 (5.1)	7 (22.6)	3 (8.8)	2 (6.5)

Private						2 (6.9)							
<b>Fixation, n (%)</b>													
Cemented	520 (89.3)	46 (85.2)	48 (88.9)	23 (95.8)	4 (80.0)	25 (86.2)	51 (96.2)	56 (93.3)	34 (81.0)	52 (88.1)	27 (87.1)	29 (85.3)	28 (90.3)
Uncemented	40 (6.9)	6 (11.1)	5 (9.3)	1 (4.2)	1 (20.0)	-	2 (3.8)	3 (5.0)	6 (14.3)	6 (10.2)	4 (12.9)	3 (8.8)	2 (6.5)
Hybrid	19 (3.3)	2 (3.7)	1 (1.9)	-	-	2 (6.9)	-	1 (1.7)	2 (4.8)	1 (1.7)	-	2 (5.9)	1 (3.2)
<b>Mean EQ-5D (SD)</b>	0.422 (0.217)	-	0.259	-	-	-	-	-	-	-	-	-	-

ASA, American Society of Anesthesiologists; EQ-5D, EuroQoL five-dimension questionnaire; SD, standard deviation.

**Table x.** Elective primary knee arthroplasty for other elective indications in Denmark: patient and prosthesis characteristics.

Characteristic	2019 (n = 1,235)	2020 January (n = 205)	February (n = 179)	March (n = 207)	April (n = 143)	May (n = 232)	June (n = 199)	July (n = 61)	August (n = 119)	September (n = 186)	October (n = 117)	November (n = 167)	December (n = 110)
<b>Age, n (%)</b>													
< 40	23 (1.9)	< 5 (.)	< 5 (.)	< 5 (.)	< 5 (.)	6 (2.6)	< 5 (.)	< 5 (.)	< 5 (.)	< 5 (.)	< 5 (.)	< 5 (.)	< 5 (.)
40 to 45	30 (2.4)	< 5 (.)	< 5 (.)	6 (2.9)	< 5 (.)	< 5 (.)	5 (2.5)	< 5 (.)	< 5 (.)	6 (3.2)	0 (0.0)	< 5 (.)	< 5 (.)
45 to 50	71 (5.7)	16 (7.8)	13 (7.3)	5 (2.4)	10 (7.0)	12 (5.2)	Masked	< 5 (.)	10 (8.4)	10 (5.4)	7 (6.0)	6 (3.6)	7 (6.4)
50 to 55	162 (13.1)	24 (11.7)	32 (17.9)	23 (11.1)	19 (13.3)	24 (10.3)	30 (15.1)	10 (16.4)	12 (10.1)	17 (9.1)	10 (8.5)	13 (7.8)	15 (13.6)
55 to 60	219 (17.7)	32 (15.6)	36 (20.1)	37 (17.9)	24 (16.8)	45 (19.4)	34 (17.1)	9 (14.8)	20 (16.8)	20 (10.8)	19 (16.2)	27 (16.2)	23 (20.9)
60 to 65	203 (16.4)	42 (20.5)	25 (14.0)	38 (18.4)	29 (20.3)	46 (19.8)	35 (17.6)	12 (19.7)	25 (21.0)	53 (28.5)	23 (19.7)	47 (28.1)	17 (15.5)
65 to 70	185 (15.0)	34 (16.6)	25 (14.0)	40 (19.3)	23 (16.1)	33 (14.2)	22 (11.1)	9 (14.8)	20 (16.8)	28 (15.1)	21 (17.9)	25 (15.0)	18 (16.4)
70 to 75	181 (14.7)	27 (13.2)	21 (11.7)	25 (12.1)	19 (13.3)	32 (13.8)	32 (16.1)	6 (9.8)	15 (12.6)	27 (14.5)	23 (19.7)	26 (15.6)	11 (10.0)
75 to 80	110 (8.9)	14 (6.8)	14 (7.8)	16 (7.7)	10 (7.0)	21 (9.1)	17 (8.5)	< 5 (.)	11 (9.2)	14 (7.5)	10 (8.5)	10 (6.0)	9 (8.2)
80 to 85	41 (3.3)	8 (3.9)	8 (4.5)	12 (5.8)	5 (3.5)	6 (2.6)	10 (5.0)	5 (8.2)	< 5 (.)	6 (3.2)	< 5 (.)	8 (4.8)	< 5 (.)
85 to 90	Masked	< 5 (.)	< 5 (.)	< 5 (.)	< 5 (.)	< 5 (.)	0 (0.0)	0 (0.0)	0 (0.0)	< 5 (.)	< 5 (.)	< 5 (.)	< 5 (.)
90 to 95	< 5 (.)	0 (0.0)	0 (0.0)	< 5 (.)	0 (0.0)	< 5 (.)	0 (0.0)	0 (0.0)	0 (0.0)	0 (0.0)	0 (0.0)	0 (0.0)	0 (0.0)
95 to 100	-	-	-	-	-	-	-	-	-	-	-	-	-
100 to 105	-	-	-	-	-	-	-	-	-	-	-	-	-
≥ 105	-	-	-	-	-	-	-	-	-	-	-	-	-
<b>Female, n (%)</b>	578 (46.8)	85 (41.5)	85 (47.5)	106 (51.2)	61 (42.7)	111 (47.8)	86 (43.2)	28 (45.9)	56 (47.1)	99 (53.2)	49 (41.9)	81 (48.5)	43 (39.1)
<b>BMI, n (%)</b>													
Underweight	< 5 (.)	< 5 (.)	< 5 (.)	< 5 (.)	0 (0.0)	< 5 (.)	0 (0.0)	< 5 (.)	< 5 (.)	0 (0.0)	< 5 (.)	< 5 (.)	0 (0.0)
Normal weight	240 (19.4)	46 (22.4)	31 (17.3)	53 (25.6)	Masked	49 (21.1)	44 (22.1)	14 (23.0)	24 (20.2)	46 (24.7)	17 (14.5)	42 (25.1)	Masked
Overweight	515 (41.7)	76 (37.1)	72 (40.2)	80 (38.6)	57 (39.9)	95 (40.9)	70 (35.2)	20 (32.8)	51 (42.9)	79 (42.5)	61 (52.1)	74 (44.3)	49 (44.5)
Obese	424 (34.3)	79 (38.5)	70 (39.1)	66 (31.9)	50 (35.0)	76 (32.8)	76 (38.2)	23 (37.7)	32 (26.9)	53 (28.5)	32 (27.4)	49 (29.3)	33 (30.0)
Morbidly obese	52 (4.2)	< 5 (.)	Masked	Masked	< 5 (.)	Masked	9 (4.5)	< 5 (.)	Masked	8 (4.3)	Masked	< 5 (.)	< 5 (.)
Missing	< 5 (.)	0 (0.0)	0 (0.0)	0 (0.0)	0 (0.0)	0 (0.0)	0 (0.0)	0 (0.0)	0 (0.0)	0 (0.0)	0 (0.0)	0 (0.0)	0 (0.0)
<b>Type of hospital, n (%)</b>													
Public	1,080 (87.4)	152 (74.1)	126 (70.4)	155 (74.9)	105 (73.4)	192 (82.8)	161 (80.9)	40 (65.6)	86 (72.3)	153 (82.3)	92 (78.6)	130 (77.8)	85 (77.3)
Private	155 (12.6)	53 (25.9)	53 (29.6)	52 (25.1)	38 (26.6)	40 (17.2)	38 (19.1)	21 (34.4)	33 (27.7)	33 (17.7)	25 (21.4)	37 (22.2)	25 (22.7)
<b>Fixation, n (%)</b>													
Cemented	732 (59.3)		90 (50.3)		74 (51.7)	130 (56.0)		29 (47.5)	57 (47.9)		60 (51.3)	92 (55.1)	65 (59.1)



Uncemented	262 (21.2)	112 (54.6)	51 (28.5)	107 (51.7)	42 (29.4)	60 (25.9)	119 (59.8)	22 (36.1)	33 (27.7)	109 (58.6)	36 (30.8)	48 (28.7)	33 (30.0)
Hybrid	224 (18.1)	49 (23.9)	Masked	56 (27.1)	Masked	Masked	44 (22.1)	10 (16.4)	Masked	44 (23.7)	Masked	Masked	Masked
Other/Unknown	17 (1.4)	39 (19.0)	< 5 (.)	Masked	< 5 (.)	< 5 (.)	36 (18.1)	0 (0.0)	< 5 (.)	28 (15.1)	< 5 (.)	< 5 (.)	< 5 (.)
n		5 (2.4)		< 5 (.)			0 (0.0)			5 (2.7)			

**Table xi.** Acute primary knee arthroplasty indications in the Netherlands: patient and prosthesis characteristics.

Characteristic	2019 (n = 436)	2020 January (n = 40)	February (n = 46)	March (n = 24)	April (n = 6)	May (n = 22)	June (n = 32)	July (n = 33)	August (n = 23)	September (n = 38)	October (n = 35)	November (n = 31)	December (n = 24)
<b>Age, n (%)</b>													
< 40	12 (2.8)	1 (2.5)	-	1 (4.2)	-	2 (9.1)	1 (3.1)	2 (6.1)	-	2 (5.3)	1 (2.9)	3 (9.7)	-
40 to 45	12 (2.8)	5 (12.5)	-	-	-	-	1 (3.1)	1 (3.0)	-	1 (2.6)	1 (2.9)	1 (3.2)	-
45 to 50	17 (3.9)	2 (5.0)	5 (10.9)	1 (4.2)	-	1 (4.5)	2 (6.3)	-	2 (8.7)	2 (5.3)	3 (8.6)	3 (9.7)	-
50 to 55	49 (11.2)	2 (5.0)	2 (4.3)	2 (8.3)	1 (16.7)	4 (18.2)	3 (9.4)	3 (9.1)	7 (30.4)	6 (15.8)	2 (5.7)	4 (12.9)	5 (20.8)
55 to 60	69 (15.8)	5 (12.5)	11 (23.9)	7 (29.2)	-	5 (22.7)	6 (18.8)	5 (15.2)	3 (13.0)	7 (18.4)	3 (8.6)	3 (9.7)	6 (25.0)
60 to 65	80 (18.3)	9 (22.5)	5 (10.9)	-	3 (50.0)	6 (27.3)	5 (15.6)	6 (18.2)	4 (17.4)	6 (15.8)	11 (31.4)	7 (22.6)	5 (20.8)
65 to 70	77 (17.7)	6 (15.0)	8 (17.4)	6 (25.0)	1 (16.7)	-	4 (12.5)	7 (21.2)	1 (4.3)	10 (26.3)	4 (11.4)	4 (12.9)	2 (8.3)
70 to 75	66 (15.1)	7 (17.5)	5 (10.9)	5 (20.8)	-	3 (13.6)	2 (15.6)	5 (15.2)	3 (13.0)	2 (5.3)	7 (20.0)	2 (6.5)	3 (12.5)
75 to 80	31 (7.1)	3 (7.5)	8 (17.4)	2 (8.3)	1 (16.7)	1 (4.5)	3 (9.4)	1 (3.0)	3 (13.0)	2 (5.3)	2 (5.7)	1 (3.2)	1 (4.2)
80 to 85	16 (3.7)	-	1 (2.2)	-	-	-	2 (6.3)	2 (6.1)	-	-	1 (2.9)	1 (3.2)	2 (8.3)
85 to 90	7 (1.6)	-	1 (2.2)	-	-	-	-	1 (3.0)	-	-	-	2 (6.5)	-
90 to 95	-	-	-	-	-	-	-	-	-	-	-	-	-
95 to 100	-	-	-	-	-	-	-	-	-	-	-	-	-
100 to 105	-	-	-	-	-	-	-	-	-	-	-	-	-
≥ 105	-	-	-	-	-	-	-	-	-	-	-	-	-
Female, n (%)	257 (58.9)	25 (62.5)	26 (56.5)	13 (54.2)	4 (66.7)	11 (50.0)	23 (71.9)	21 (63.6)	17 (73.9)	27 (71.1)	22 (62.9)	19 (61.3)	6 (25.0)
<b>BMI, n (%)</b>													
Underweight	2 (0.5)	-	-	3 (12.5)	-	-	-	1 (3.0)	-	-	2 (5.7)	1 (3.2)	-
Normal weight	119 (27.3)	11 (27.5)	12 (26.1)	3 (12.5)	1 (16.7)	7 (31.8)	5 (15.6)	10 (30.3)	7 (30.4)	7 (18.4)	9 (25.7)	7 (22.6)	7 (29.2)
Overweight	175 (40.1)	13 (32.5)	22 (47.8)	8 (33.3)	3 (50.0)	10 (45.5)	15 (46.9)	13 (39.4)	9 (39.1)	13 (34.2)	7 (20.0)	14 (45.2)	9 (37.5)
Obese	122 (28.0)	16 (40.0)	10 (21.7)	7 (29.2)	1 (16.7)	5 (22.7)		8 (24.2)	7 (30.4)	16 (42.1)	11 (31.4)	8 (25.8)	8 (33.3)
	16 (3.7)	-	2 (4.3)	2 (8.3)	1 (16.7)	-		1 (3.0)	-	-	3 (8.6)	1 (3.2)	-

Morbidly obese Missing	2 (0.5)	-	-	1 (4.2)	-	-	10 (31.3) 2 (6.3) -	-	-	2 (5.3)	3 (8.6)	-	-
<b>ASA, n (%)</b> I II III-IV	78 (17.9) 282 (64.7) 76 (17.4)	4 (10.0) 34 (85.0) 2 (5.0)	12 (26.1) 21 (45.7) 13 (28.3)	4 (16.7) 12 (50.0) 8 (33.3)	- 5 (83.3) 1 (16.7)	5 (22.7) 13 (59.1) 4 (18.4)	8 (25.0) 14 (43.8) 10 (31.3)	5 (15.2) 19 (57.6) 9 (27.3)	6 (26.1) 14 (60.9) 2 (8.7)	5 (13.2) 29 (76.3) 4 (10.5)	4 (11.4) 27 (77.1) 4 (11.4)	7 (22.6) 19 (61.3) 5 (16.1)	6 (25.0) 15 (62.5) 3 (12.5)
<b>Type of hospital, n (%)</b> Public Private	382 (87.6) 54 (12.4)	35 (87.5) 5 (12.5)	36 (78.3) 10 (21.7)	20 (83.3) 4 (16.7)	6 (100.0) -	21 (95.5) 1 (4.5)	26 (81.3) 6 (18.8)	27 (81.8) 6 (18.2)	18 (78.3) 5 (21.7)	29 (76.3) 9 (23.7)	28 (80.0) 7 (20.0)	25 (80.6) 3 (9.7)	16 (66.7) 8 (33.3)
<b>Fixation, n (%)</b> Cemented Uncemented Hybrid	369 (84.6) 32 (7.3) 29 (6.7)	36 (90.0) 2 (5.0) 1 (2.5)	40 (87.0) 3 (6.5) 3 (6.5)	20 (83.3) 2 (8.3) 2 (8.3)	6 (100.0) - -	18 (81.8) 3 (13.6) 1 (4.5)	31 (96.9) 1 (3.1) -	26 (78.8) 2 (6.1) 4 (12.1)	22 (95.7) - 1 (4.3)	33 (86.8) 2 (5.3) 3 (7.9)	31 (88.6) 3 (8.6) 1 (2.9)	28 (90.3) - 3 (9.7)	20 (83.3) 1 (4.2) 2 (8.3)
<b>Mean EQ-5D (SD)</b>	0.663	0.744	-	-	-	-	-	-	-	-	-	-	-

ASA, American Society of Anesthesiologists; EQ-5D; EuroQoL five-dimension questionnaire; SD, standard deviation.



Other/Unknown	< 5 (.)	0 (0.0)	0 (0.0)	0 (0.0)	0 (0.0)	< 5 (.) < 5 (.)	0 (0.0)	0 (0.0)	0 (0.0)	< 5 (.)	0 (0.0)	0 (0.0)	0 (0.0)
---------------	---------	---------	---------	---------	---------	--------------------	---------	---------	---------	---------	---------	---------	---------

## Shoulder arthroplasty

**Table xiii.** Elective primary shoulder arthroplasty for osteoarthritis in the Netherlands: patient and prosthesis characteristics.

Characteristic	2019 (n = 1,465)	2020 January (n = 133)	February (n = 133)	March (n = 73)	April (n = 4)	May (n = 52)	June (n = 121)	July (n = 116)	August (n = 102)	September (n = 171)	October (n = 120)	November (n = 87)	December (n = 95)
<b>Age, n (%)</b>													
< 40	4 (0.3)	2 (1.5)	-	-	-	-	-	1 (0.9)	-	-	-	-	-
40 to 45	4 (0.3)	-	2 (1.5)	-	-	-	2 (1.7)	-	-	-	-	-	-
45 to 50	23 (1.6)	2 (1.5)	2 (1.5)	-	-	-	2 (1.7)	2 (1.7)	2 (2.0)	2 (1.2)	1 (0.8)	-	2 (2.1)
50 to 55	45 (3.1)	6 (4.5)	3 (2.3)	-	-	2 (3.8)	2 (1.7)	4 (3.4)	2 (2.0)	5 (2.9)	3 (2.5)	3 (3.4)	1 (1.1)
55 to 60	92 (6.3)	6 (4.5)	11 (8.3)	6 (8.2)	1 (25.0)	5 (9.6)	8 (6.6)	7 (6.0)	4 (3.9)	9 (5.3)	8 (6.7)	7 (8.0)	6 (6.3)
60 to 65	161 (11.0)	12 (9.0)	13 (9.8)	8 (11.0)	-	11 (21.2)	19 (15.7)	12 (10.3)	12 (11.8)	23 (13.5)	8 (6.7)	7 (8.0)	10 (10.5)
65 to 70	223 (15.2)	23 (17.3)	19 (14.3)	11 (15.1)	1 (25.0)	7 (13.5)	13 (10.7)	18 (15.5)	21 (20.6)	23 (13.5)	24 (20.0)	25 (28.7)	17 (17.9)
70 to 75	346 (23.6)	34 (25.6)	36 (27.1)	27 (37.0)	1 (25.0)	11 (21.2)	31 (25.6)	30 (25.9)	23 (22.5)	43 (25.1)	25 (20.8)	17 (19.5)	25 (26.3)
75 to 80	296 (20.2)	22 (16.5)	22 (16.5)	11 (15.1)	-	8 (15.4)	25 (20.7)	23 (19.8)	19 (18.6)	39 (22.8)	27 (22.5)	11 (12.6)	13 (13.7)
80 to 85	201 (13.7)	15 (11.3)	19 (14.3)	4 (5.5)	-	7 (13.5)	14 (11.6)	13 (11.2)	15 (14.7)	23 (13.5)	15 (12.5)	14 (16.1)	15 (15.8)
85 to 90	64 (4.4)	11 (8.3)	5 (3.8)	5 (6.8)	1 (25.0)	1 (1.9)	4 (3.3)	5 (4.3)	3 (2.9)	3 (1.8)	8 (6.7)	3 (3.4)	6 (6.3)
90 to 95	6 (0.4)	-	1 (0.8)	1 (1.4)	-	-	1 (0.8)	1 (0.9)	1 (1.0)	1 (0.6)	1 (0.8)	-	-
95 to 100	-	-	-	-	-	-	-	-	-	-	-	-	-
100 to 105	-	-	-	-	-	-	-	-	-	-	-	-	-
≥ 105	-	-	-	-	-	-	-	-	-	-	-	-	-
Female, n (%)	1,056 (72.1)	99 (74.4)	97 (72.9)	58 (79.5)	4 (100.0)	33 (63.5)	84 (69.4)	80 (69.0)	79 (77.5)	118 (69.0)	94 (78.3)	61 (70.1)	62 (65.3)
<b>BMI, n (%)</b>													
Underweight	6 (0.4)	-	1 (0.8)	-	-	-	1 (0.8)	1 (0.9)	-	-	1 (0.8)	-	-
Normal weight	365 (24.9)	29 (21.8)	30 (22.6)	21 (28.8)	1 (25.0)	13 (25.0)	32 (26.4)	26 (22.4)	26 (25.5)	41 (24.0)	37 (30.8)	22 (25.3)	23 (24.2)
Overweight	628 (42.9)	52 (39.1)	53 (39.8)	29 (39.7)	1 (25.0)	20 (38.5)	47 (38.8)	52 (44.8)	45 (44.1)	62 (36.3)	44 (36.7)	39 (44.8)	47 (49.5)
Obese	416 (28.4)	44 (33.1)	43 (32.3)	16 (21.9)	2 (50.0)	14 (26.9)	35 (28.9)	35 (30.2)	26 (25.5)	51 (29.8)	29 (24.2)	23 (26.4)	22 (23.2)
Morbidly obese	37 (2.5)	4 (3.0)	2 (1.5)	3 (4.1)	-	3 (5.8)	2 (1.7)	1 (0.9)	3 (2.9)	12 (7.0)	3 (2.5)	2 (2.3)	-
Missing	13 (0.9)	4 (3.0)	4 (3.0)	4 (5.5)	-	2 (3.8)	4 (3.3)	1 (0.9)	2 (2.0)	5 (2.9)	6 (5.0)	1 (1.1)	3 (3.2)
<b>ASA, n (%)</b>													
I	137 (9.4)	12 (9.0)	11 (8.3)	10 (13.7)	1 (25.0)	5 (9.6)	11 (9.1)	12 (10.3)	7 (6.9)	17 (9.9)	5 (4.2)	2 (2.3)	10 (10.5)
II	860 (58.7)	79 (59.4)	73 (54.9)	37 (50.7)	2 (50.0)	30 (57.7)	76 (62.8)	70 (60.3)	56 (54.9)	100 (58.5)	83 (69.2)	64 (73.6)	60 (63.2)
III-IV	448 (30.6)	42 (31.6)	49 (36.8)	26 (35.6)	1 (25.0)	17 (32.7)	34 (28.1)	34 (29.3)	39 (38.2)	54 (31.6)	32 (26.7)	21 (24.1)	24 (25.3)

<b>Walch classification, n (%)</b>	480 (32.8)	47 (35.3)	42 (31.6)	24 (32.9)	1 (25.0)	17 (32.7)	36 (29.8)	41 (35.3)	40 (39.2)	49 (28.7)	27 (22.5)	20 (23.0)	29 (30.5)
A1	458 (31.3)	50 (37.6)	50 (37.6)	27 (37.0)	-	17 (32.7)	40 (33.1)	40 (34.5)	29 (28.4)	60 (35.1)	48 (40.0)	33 (37.9)	30 (31.6)
A2	211 (14.4)	20 (15.0)	19 (14.3)	9 (12.3)	2 (50.0)	7 (13.5)	24 (19.8)	19 (16.4)	9 (8.8)	19 (11.1)	18 (15.0)	15 (17.2)	10 (10.5)
B1	152 (10.4)	10 (7.5)	12 (9.0)	10 (13.7)	1 (25.0)	5 (9.6)	9 (7.4)	9 (7.8)	19 (18.6)	25 (14.6)	14 (11.7)	10 (11.5)	14 (14.7)
B2	49 (3.3)	-	8 (6.0)	1 (1.4)	-	1 (1.9)	4 (3.3)	2 (1.7)	2 (2.0)	12 (7.0)	6 (5.0)	4 (4.6)	5 (5.3)
B3	24 (1.6)	3 (2.3)	2 (1.5)	-	-	1 (1.9)	5 (4.1)	3 (2.6)	1 (1.0)	4 (2.3)	3 (2.5)	1 (1.1)	4 (4.2)
C	91 (6.2)	3 (2.3)	-	2 (2.7)	-	4 (7.7)	3 (2.5)	2 (1.7)	2 (2.0)	2 (1.2)	4 (3.3)	4 (4.6)	3 (3.2)
Missing													
<b>Type of hospital, n (%)</b>	1,335 (91.1)	118 (88.7)	121 (91.0)	67 (91.8)	4 (100.0)	46 (88.5)	106 (87.6)	96 (82.8)	96 (94.1)	153 (89.5)	106 (88.3)	72 (82.8)	85 (89.5)
Public				6 (8.2)		6 (11.5)	15 (12.4)	20 (17.2)	6 (5.9)	18 (10.5)	14 (11.7)	15 (17.2)	10 (10.5)
Private	130 (8.9)	15 (11.3)	12 (9.0)		-								
<b>Fixation, n (%)</b>	53 (3.6)	3 (2.3)	9 (6.8)	2 (2.7)	-	2 (3.8)	2 (1.7)	-	3 (2.9)	5 (2.9)	1 (0.8)	1 (1.1)	1 (1.1)
Cemented	938 (64.0)	89 (66.9)	79 (59.4)	43 (58.9)	2 (50.0)	29 (55.8)	74 (61.2)	70 (60.3)	61 (59.8)	103 (60.2)	79 (65.8)	53 (60.9)	61 (64.2)
Uncemented	465 (31.7)	39 (29.3)	42 (31.6)	28 (38.4)	2 (50.0)	18 (34.6)	43 (35.5)	46 (39.7)	37 (36.3)	61 (35.7)	39 (32.5)	33 (37.9)	33 (34.7)
Hybrid													
<b>Mean EQ-5D (SD)</b>	0.543 (0.207)	0.591 (0.163)	0.578 (0.1920)	0.524 (0.205)	-	0.525 (0.218)	0.558 (0.207)	0.597 (0.219)	0.590 (0.201)	0.523 (0.234)	0.561 (0.189)	0.564 (0.222)	0.537 (0.2332)

ASA, American Society of Anesthesiologists; EQ-5D, EuroQoL five-dimension questionnaire; SD, standard deviation.

**Table xiv.** Elective primary shoulder arthroplasty for other elective indications in the Netherlands: patient and prosthesis characteristics.

Characteristic	2019 (n = 1,023)	2020 January (n = 93)	February (n = 90)	March (n = 50)	April (n = 11)	May (n = 38)	June (n = 76)	July (n = 88)	August (n = 69)	September (n = 101)	October (n = 73)	November (n = 57)	December (n = 66)
<b>Age, n (%)</b>													
< 40	9 (0.9)	-	-	-	-	-	1 (1.3)	-	1 (1.4)	-	-	-	-
40 to 45	5 (0.5)	-	-	-	-	-	-	-	-	3 (3.0)	-	-	-
45 to 50	10 (1.0)	-	1 (1.1)	-	-	1 (2.6)	3 (3.9)	-	1 (1.4)	-	-	1 (1.8)	-
50 to 55	7 (0.7)	1 (1.1)	3 (3.3)	1 (2.0)	-	1 (2.6)	2 (2.6)	2 (2.3)	1 (1.4)	5 (5.0)	-	1 (1.8)	-
55 to 60	40 (3.9)	7 (7.5)	3 (3.3)	-	1 (9.1)	2 (5.3)	2 (2.6)	1 (1.1)	1 (1.4)	6 (5.9)	6 (8.2)	2 (3.5)	2 (3.0)
60 to 65	89 (8.70)	10 (10.8)	7 (7.8)	3 (6.0)	1 (9.1)	5 (13.2)	1 (1.3)	9 (10.2)	3 (4.3)	8 (7.9)	6 (8.2)	6 (10.5)	8 (12.1)
65 to 70	169 (16.5)	12 (12.9)	16 (17.8)	5 (10.0)	2 (18.2)	4 (10.5)	12 (15.8)	12 (13.6)	10 (14.5)	16 (15.8)	9 (12.3)	10 (17.5)	16 (24.2)
70 to 75	253 (24.7)	28 (30.1)	18 (20.0)	11 (22.0)	1 (9.1)	12	23 (30.3)	28 (31.8)	19 (27.5)	27 (26.7)	26 (35.6)	13 (22.8)	15 (22.7)
75 to 80	259 (25.3)	18 (19.4)	28 (31.1)	18 (36.0)	3 (27.3)	(31.6)	15 (19.7)	21 (23.9)	18 (26.1)	20 (19.8)	12 (16.4)	15 (26.3)	13 (19.7)
80 to 85	143 (14.0)	13 (14.0)	11 (12.1)	7 (14.0)	2 (18.2)	7 (18.4)	15 (19.7)	12 (13.6)	11 (15.9)	11 (10.9)	11 (15.1)	8 (14.0)	9 (13.6)
85 to 90	37 (3.6)	3 (3.2)	3 (3.3)	5 (10.0)	1 (19.1)	3 (7.9)	2 (2.6)	3 (3.4)	4 (5.8)	4 (4.0)	2 (2.7)	1 (1.8)	3 (4.5)
90 to 95	2 (0.2)	1 (1.1)	-	-	-	3 (7.9)	-	-	-	1 (1.0)	1 (1.4)	-	-
95 to 100	-	-	-	-	-	-	-	-	-	-	-	-	-
100 to 105	-	-	-	-	-	-	-	-	-	-	-	-	-
≥ 105	-	-	-	-	-	-	-	-	-	-	-	-	-
Female, n (%)	715 (69.9)	66 (71.0)	62 (68.9)	40 (80.0)	10 (90.9)	26 (68.4)	57 (75.0)	63 (71.6)	49 (71.0)	67 (66.3)	59 (80.8)	43 (75.4)	39 (59.1)
<b>BMI, n (%)</b>													
Underweight	8 (0.8)	-	1 (1.1)	1 (2.0)	-	-	1 (1.3)	2 (2.3)	-	-	-	1 (1.8)	-
Normal weight	275 (26.9)	20 (21.5)	21 (23.3)	17 (34.0)	4 (36.4)	8 (21.1)	17 (22.4)	24 (27.3)	23 (33.3)	38 (37.6)	23 (31.5)	20 (35.1)	17 (25.8)
Overweight	425 (41.5)	39 (41.9)	36 (40.0)	19 (38.0)	4 (36.4)	16	25 (32.9)	27 (30.7)	26 (37.7)	36 (35.6)	29 (39.7)	23 (40.4)	26 (39.4)
Obese	286 (28.0)	29 (31.2)	27 (30.0)	11 (22.0)	2 (18.2)	(42.1)	28 (36.8)	29 (33.0)	18 (26.1)	22 (21.8)	17 (23.3)	13 (22.8)	16 (24.2)
Morbidly obese	22 (2.2)	4 (4.3)	2 (2.2)	-	1 (9.1)	11	2 (2.6)	82 (93.2)	1 (1.4)	-	2 (2.7)	-	2 (3.0)
Missing	7 (0.7)	1 (1.1)	3 (3.3)	2 (4.0)	-	(28.9)	3 (3.9)	6 (6.8)	1 (1.4)	5 (5.0)	2 (2.7)	-	5 (7.6)
						3 (7.9)							
<b>ASA, n (%)</b>													
I	57 (5.6)	5 (5.4)	6 (6.7)	4 (8.0)	-	3 (7.9)	4 (5.3)	4 (4.5)	6 (8.7)	4 (4.0)	4 (5.5)	2 (3.5)	2 (3.0)
II	571 (55.8)	51 (54.8)	55 (61.1)	24 (48.0)	7 (63.6)	19	41 (53.9)	46 (52.3)	38 (55.1)	53 (52.5)	44 (60.3)	40 (70.2)	41 (62.1)
III-IV	367 (35.9)	37 (39.8)	28 (31.1)	22 (44.0)	4 (36.4)	(50.0)	31 (40.8)	37 (42.0)	25 (36.2)	44 (43.6)	25 (34.2)	15 (26.3)	22 (33.3)

						16 (42.1)							
<b>Walch classification, n (%)</b>	557 (54.4)	54 (58.1)	52 (57.8)	23 (46.0)	5 (45.5)	21 (55.3)	36 (47.4)	51 (58.0)	36 (52.2)	49 (48.5)	42 (57.5)	31 (54.4)	38 (57.6)
A1	219 (21.4)	18 (19.4)	21 (23.3)	15 (30.0)	3 (27.3)	5 (13.2)	24 (31.6)	17 (19.3)	17 (24.6)	23 (22.8)	16 (21.9)	12 (21.1)	14 (21.2)
A2	61 (6.0)	4 (4.3)	5 (5.6)	3 (6.0)	1 (9.1)	5 (13.2)	1 (1.3)	4 (4.5)	4 (5.8)	6 (5.9)	4 (5.5)	2 (3.5)	3 (4.5)
B1	27 (2.6)	2 (2.2)	1 (1.1)	3 (6.0)	-	1 (2.6)	3 (3.9)	6 (6.8)	3 (4.3)	2 (2.0)	2 (2.7)	2 (3.5)	1 (1.5)
B2	14 (1.4)	2 (2.2)	-	1 (2.0)	-	2 (5.3)	-	1 (1.1)	1 (1.4)	2 (2.0)	1 (1.4)	3 (5.3)	2 (3.0)
B3	14 (1.4)	2 (2.2)	1 (1.1)	1 (2.0)	-	1 (2.6)	3 (3.9)	2 (2.3)	-	1 (1.0)	1 (1.4)	1 (1.8)	-
C	131 (12.8)	11 (11.8)	10 (11.1)	4 (8.0)	2 (18.2)	-	9 (11.8)	7 (8.0)	8 (11.6)	18 (17.8)	-	6 (10.5)	8 (12.1)
Missing						8 (21.1)							
<b>Type of hospital, n (%)</b>	965 (94.3)	87 (93.5)	80 (88.9)	45 (90.0)	11 (100.0)	38 (100.0)	70 (92.1)	80 (90.9)	65 (94.2)	97 (96.0)	59 (80.8)	48 (84.2)	59 (89.4)
Public	58 (5.7)	6 (6.5)	10 (11.1)	5 (10.0)	-	-	6 (7.9)	8 (9.1)	4 (5.8)	4 (4.0)	14 (19.2)	9 (15.8)	7 (10.6)
Private													
<b>Fixation, n (%)</b>	14 (1.4)	5 (5.4)	3 (3.3)	1 (2.0)	1 (9.1)	-	3 (3.9)	4 (4.5)	-	3 (3.0)	3 (4.1)	-	-
Cemented	903 (88.3)	82 (88.2)	79 (87.8)	42 (84.0)	7 (63.6)	26 (68.4)	66 (86.8)	76 (86.4)	57 (82.6)	85 (84.2)	64 (87.7)	46 (80.7)	59 (89.4)
Uncemented	104 (10.2)	6 (6.5)	7 (7.8)	7 (14.0)	3 (27.3)	12 (31.6)	7 (9.2)	8 (9.1)	12 (17.4)	13 (12.9)	6 (8.2)	10 (17.5)	7 (10.6)
Hybrid													
<b>Mean EQ-5D (SD)</b>	0.536 (0.204)	0.545 (0.207)	0.534 (0.213)	0.549 (0.239)	0.545 (0.141)	0.424 (0.296)	0.488 (0.195)	0.533 (0.199)	0.561 (0.233)	0.502 (0.213)	0.383 (0.363)	0.534 (0.276)	0.480 (0.273)

ASA, American Society of Anesthesiologists; EQ-5D, EuroQoL five-dimension questionnaire; SD, standard deviation.



**Table xv.** Acute primary hip arthroplasty indications in the Netherlands: patient and prosthesis characteristics.

Characteristic	2019 (n = 765)	2020 January (n = 63)	February (n = 69)	March (n = 55)	April (n = 49)	May (n = 57)	June (n = 68)	July (n = 68)	August (n = 47)	September (n = 100)	October (n = 61)	November (n = 49)	December (n = 90)
<b>Age, n (%)</b>													
< 40	4 (0.5)	-	-	1 (1.8)	-	-	-	-	-	-	-	-	1 (1.1)
40 to 45	2 (0.3)	-	-	-	-	-	-	-	-	1 (1.0)	-	-	-
45 to 50	5 (0.7)	1 (1.6)	3 (4.3)	1 (1.8)	-	2 (3.5)	2 (2.9)	-	-	1 (1.0)	2 (3.3)	-	2 (2.2)
50 to 55	24 (3.1)	2 (3.2)	3 (4.3)	5 (9.1)	-	2 (3.5)	-	2 (2.9)	1 (2.1)	2 (2.0)	1 (1.6)	-	-
55 to 60	31 (4.1)	4 (6.3)	6 (8.7)	4 (7.3)	3 (6.1)	2 (3.5)	5 (7.4)	4 (5.9)	3 (6.4)	10 (10.0)	2 (3.3)	1 (2.0)	8 (8.9)
60 to 65	70 (9.2)	8 (12.7)	7 (10.1)	5 (9.1)	5 (10.2)	6 (10.5)	3 (4.4)	9 (13.2)	5 (10.6)	16 (16.0)	4 (6.6)	7 (14.3)	9 (10.0)
65 to 70	125 (16.3)	14 (22.2)	10 (14.5)	10 (18.2)	7 (14.3)	10 (17.5)	16 (23.5)	7 (10.3)	11 (23.4)	14 (14.0)	13 (21.3)	9 (18.4)	18 (20.0)
70 to 75	183 (23.9)	18 (28.6)	12 (17.4)	14 (25.5)	10 (20.4)	13 (22.8)	18 (26.5)	25 (36.8)	4 (8.5)	21 (21.0)	14 (23.0)	16 (32.7)	17 (18.9)
75 to 80	155 (20.3)	11 (17.5)	14 (20.3)	6 (10.9)	15 (30.6)	10 (17.5)	13 (19.1)	11 (16.2)	12 (25.5)	16 (16.0)	11 (18.0)	11 (22.4)	19 (21.1)
80 to 85	107 (14.0)	3 (4.8)	9 (13.0)	5 (9.1)	7 (14.3)	6 (10.5)	7 (10.3)	7 (10.3)	8 (17.0)	12 (12.0)	9 (14.8)	4 (8.2)	11 (12.2)
85 to 90	45 (5.9)	1 (1.6)	4 (5.8)	3 (5.5)	2 (4.1)	6 (10.5)	3 (4.4)	3 (4.4)	3 (6.4)	7 (7.0)	4 (6.6)	-	4 (4.4)
90 to 95	12 (1.6)	1 (1.6)	1 (1.4)	1 (1.8)	-	-	1 (1.5)	-	-	-	1 (1.6)	1 (2.0)	1 (1.1)
95 to 100	2 (0.3)	-	-	-	-	-	-	-	-	-	-	-	-
100 to 105	-	-	-	-	-	-	-	-	-	-	-	-	-
≥ 105	-	-	-	-	-	-	-	-	-	-	-	-	-
Female, yes (%)	611 (79.9)	50 (79.4)	58 (84.1)	45 (81.8)	46 (93.9)	44 (77.2)	59 (86.8)	58 (85.3)	40 (85.1)	84 (84.0)	53 (86.9)	40 (81.6)	67 (74.4)
<b>BMI, n (%)</b>													
Underweight	8 (1.0)	1 (1.6)	2 (2.9)	1 (1.8)	1 (2.0)	1 (1.8)	1 (1.5)	-	-	-	1 (1.6)	-	3 (3.3)
Normal weight	217 (28.4)	23 (36.5)	18 (26.1)	12 (21.8)	18 (36.7)	19 (33.3)	22 (32.4)	21 (30.9)	11 (23.4)	25 (25.0)	22 (36.1)	10 (20.4)	22 (24.4)
Overweight	280 (36.6)	13 (20.6)	19 (27.5)	21 (38.2)	16 (32.7)	13 (22.8)	27 (39.7)	24 (35.3)	8 (17.0)	30 (30.0)	17 (27.9)	18 (36.7)	34 (37.8)
Obese	211 (27.6)	21 (33.3)	21 (30.4)	16 (29.1)	11 (22.4)	16 (28.1)	15 (22.1)	18 (26.5)	21 (44.7)	32 (32.0)	16 (26.2)	15 (30.6)	27 (30.0)
Morbidly obese	29 (3.8)	2 (3.2)	3 (4.3)	2 (3.6)	2 (4.1)	1 (1.8)	2 (2.9)	3 (4.4)	3 (6.4)	11 (11.0)	3 (4.9)	2 (4.1)	2 (2.2)
Missing	20 (2.6)	3 (4.8)	6 (8.7)	3 (5.5)	1 (2.0)	7 (12.3)	1 (1.5)	2 (2.9)	4 (8.5)	2 (2.0)	2 (3.3)	4 (8.2)	2 (2.2)
<b>ASA, n (%)</b>													
I	56 (7.3)	5 (7.9)	2 (2.9)	2 (3.6)	4 (8.2)	7 (12.3)	8 (11.8)	3 (4.4)	4 (8.5)	8 (8.0)	2 (3.3)	3 (6.1)	1 (1.1)
II	371 (48.5)	39 (61.9)	38 (55.1)	33 (60.0)	25 (51.0)	28 (49.1)	42 (61.8)	42 (61.8)	22 (46.8)	52 (52.0)	31 (50.8)	29 (59.2)	54 (60.0)
III-IV	312 (40.8)	19 (30.2)	29 (42.0)	20 (36.4)	20 (40.8)	22 (38.6)	18 (26.5)	23 (33.8)	21 (44.7)	40 (40.0)	27 (44.3)	17 (34.7)	35 (38.9)
<b>Walch classification, n (%)</b>													
A1	280 (36.6)	29 (46.0)	21 (30.4)	20 (36.4)	14 (28.6)	22 (38.6)	29 (42.6)	17 (25.0)	17 (36.2)	47 (47.0)	18 (29.5)	19 (38.8)	24 (26.7)
	60 (7.8)	4 (6.3)	2 (2.9)	4 (7.3)	1 (2.0)	4 (7.0)	8 (11.8)	5 (7.4)	3 (6.4)	6 (6.0)	4 (6.6)	2 (4.1)	6 (6.7)

A2	20 (2.6)	2 (3.2)	1 (1.4)	-	-	1 (1.8)	2 (2.9)	1 (1.5)	-	-	3 (4.9)	-	-
B1	18 (2.4)	1 (1.6)	1 (1.4)	1 (1.8)	-	-	1 (1.5)	1 (1.5)	-	-	2 (3.3)	-	-
B2	1 (0.1)	1 (1.6)	1 (1.4)	-	-	1 (1.8)	-	-	-	1 (1.0)	-	-	-
B3	2 (0.3)	1 (1.6)	-	-	-	-	-	-	-	46 (46.0)	-	-	2 (2.2)
C	384 (50.2)	25 (39.7)	43 (62.3)	30 (54.5)	34 (69.4)	29 (50.9)	28 (41.2)	44 (64.7)	27 (57.4)	-	34 (55.7)	29 (57.1)	58 (64.4)
Missing													
<b>Type of hospital, n (%)</b>													
Public	758 (99.1)	63 (100.0)	68 (98.6)	55 (100.0)	49 (100.0)	56 (98.2)	68 (100.00)	66 (97.1)	47 (100.0)	96 (96.0)	61 (100.0)	49 (100.0)	90 (100.0)
Private	7 (0.9)	-	1 (1.4)	-	-	1 (1.8)	-	2 (2.9)	-	4 (4.0)	-	-	-
<b>Fixation, n (%)</b>													
Cemented	115 (15.0)	7 (11.1)	11 (15.9)	13 (23.6)	13 (26.5)	7 (12.3)	7 (10.3)	7 (10.3)	5 (10.6)	10 (10.0)	6 (9.8)	3 (6.1)	7 (7.8)
Uncemented	257 (33.6)	22 (34.9)	20 (29.0)	16 (29.1)	9 (18.4)	28 (49.1)	29 (42.6)	23 (33.8)	17 (36.2)	38 (38.0)	29 (47.5)	14 (28.6)	38 (42.2)
Hybrid	386 (50.5)	32 (50.8)	35 (50.7)	24 (43.6)	25 (51.0)	21 (36.8)	30 (44.1)	36 (52.9)	24 (51.1)	52 (52.0)	26 (42.6)	31 (63.3)	45 (50.0)
<b>Mean EQ-5D (SD)</b>	0.459 (0.246)	0.482 (0.184)	0.489 (0.140)	0.486 (0.238)	0.739	0.370 (0.359)	0.526 (0.244)	0.585 (0.246)	0.423 (0.246)	0.430 (0.276)	0.541 (0.191)	0.377 (0.255)	0.334 (0.289)

ASA, American Society of Anesthesiologists; EQ-5D; EuroQoL five-dimension questionnaire; SD, standard deviation.