

Supplementary Material

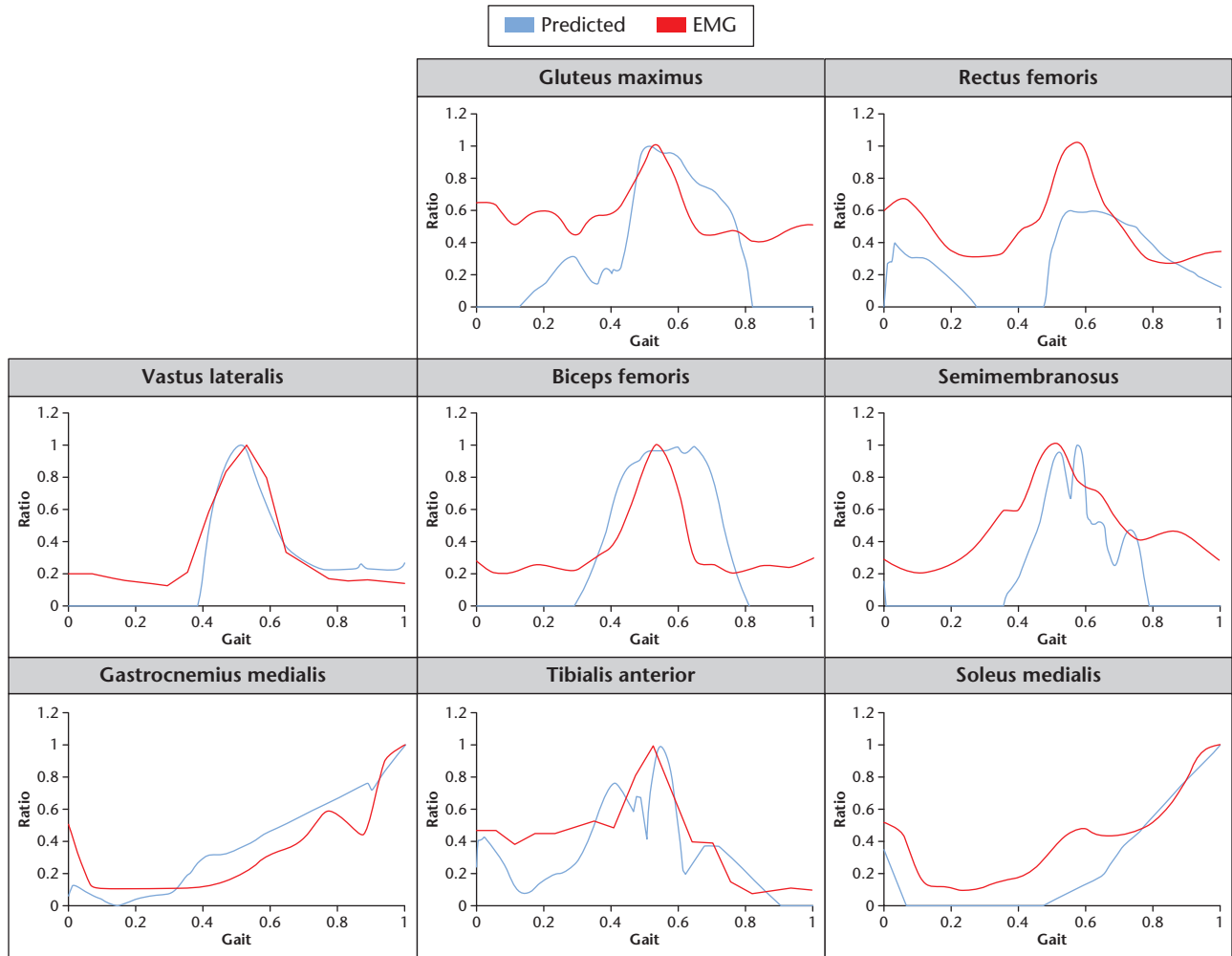


Fig. aa

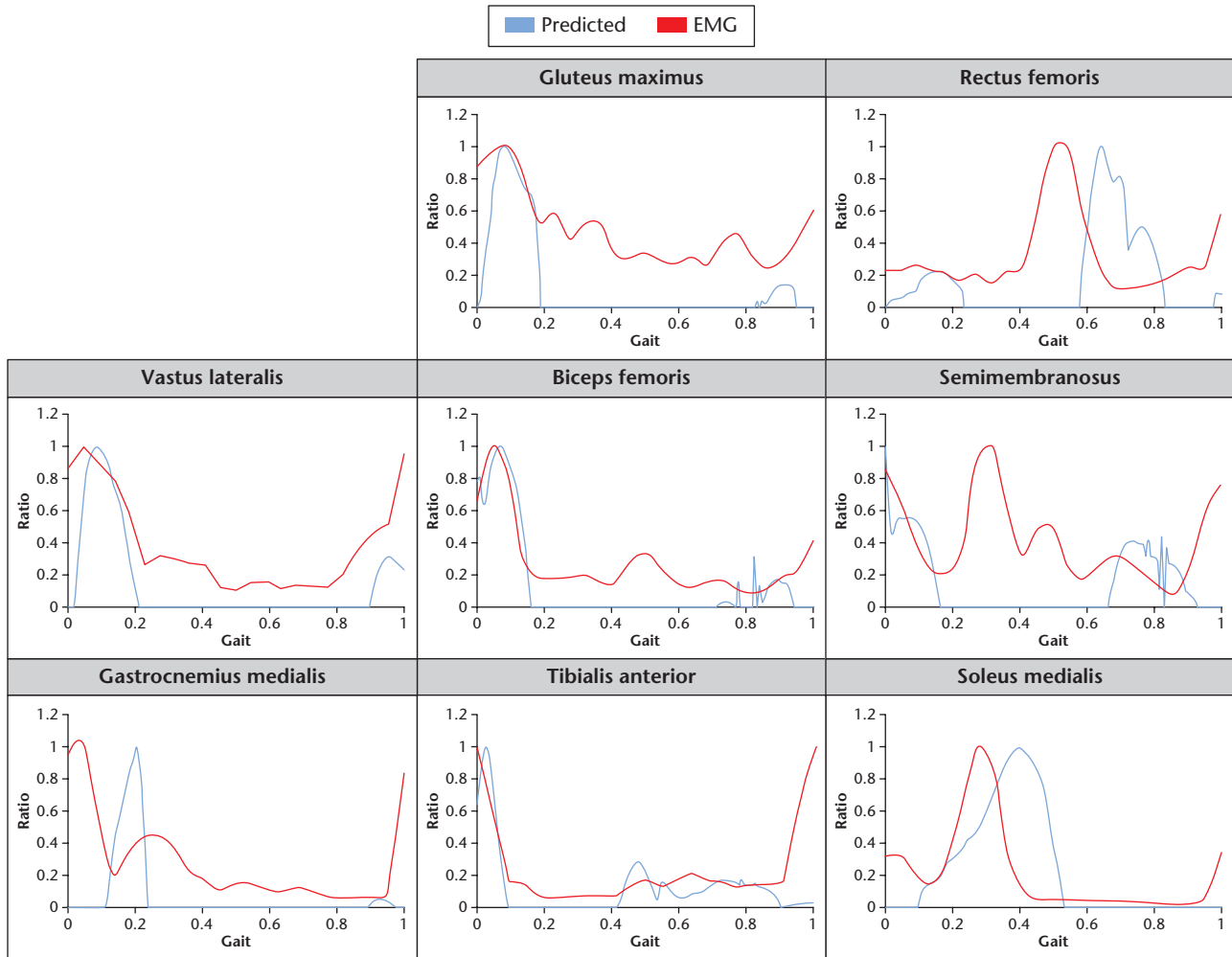


Fig. ab

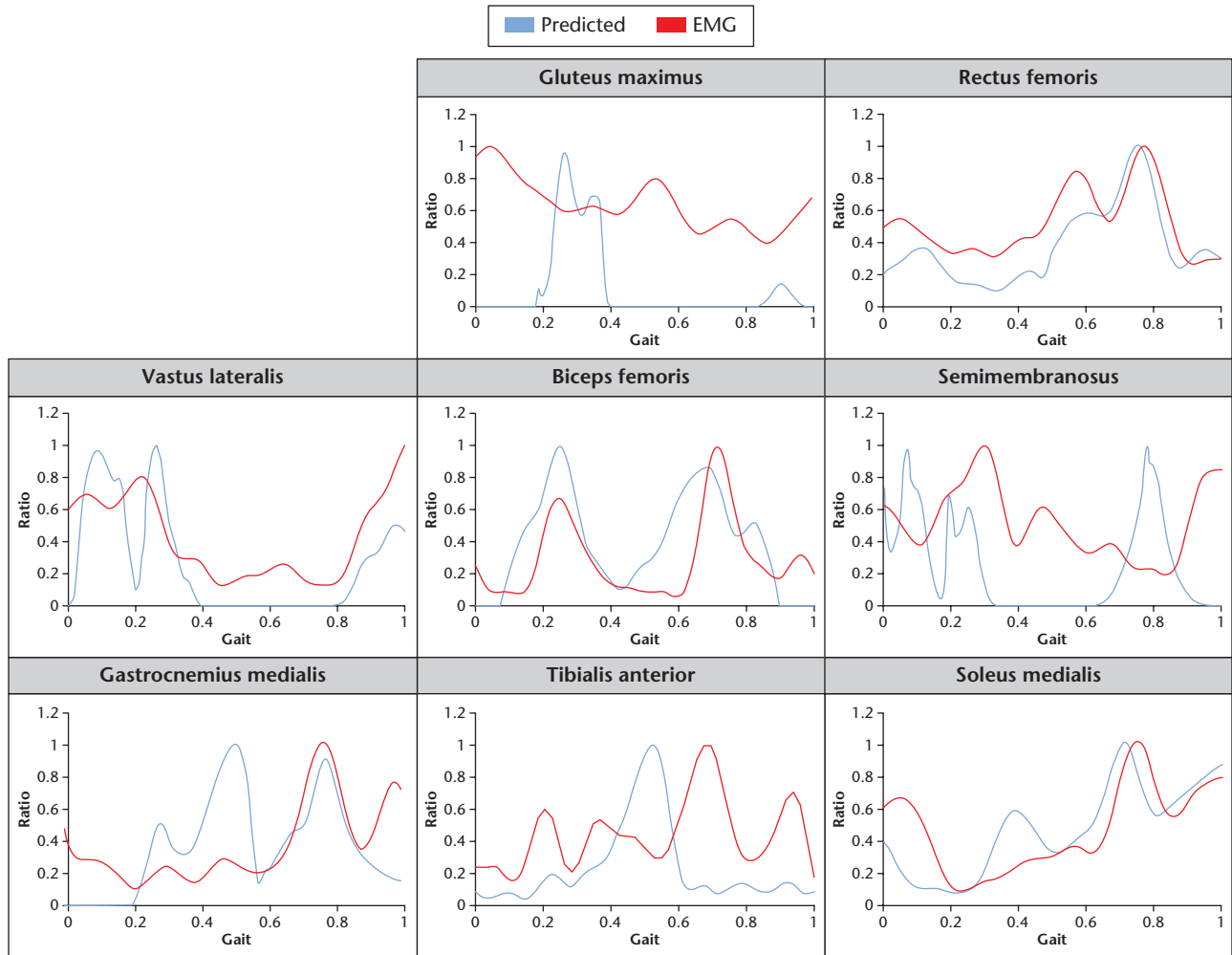


Fig. ac

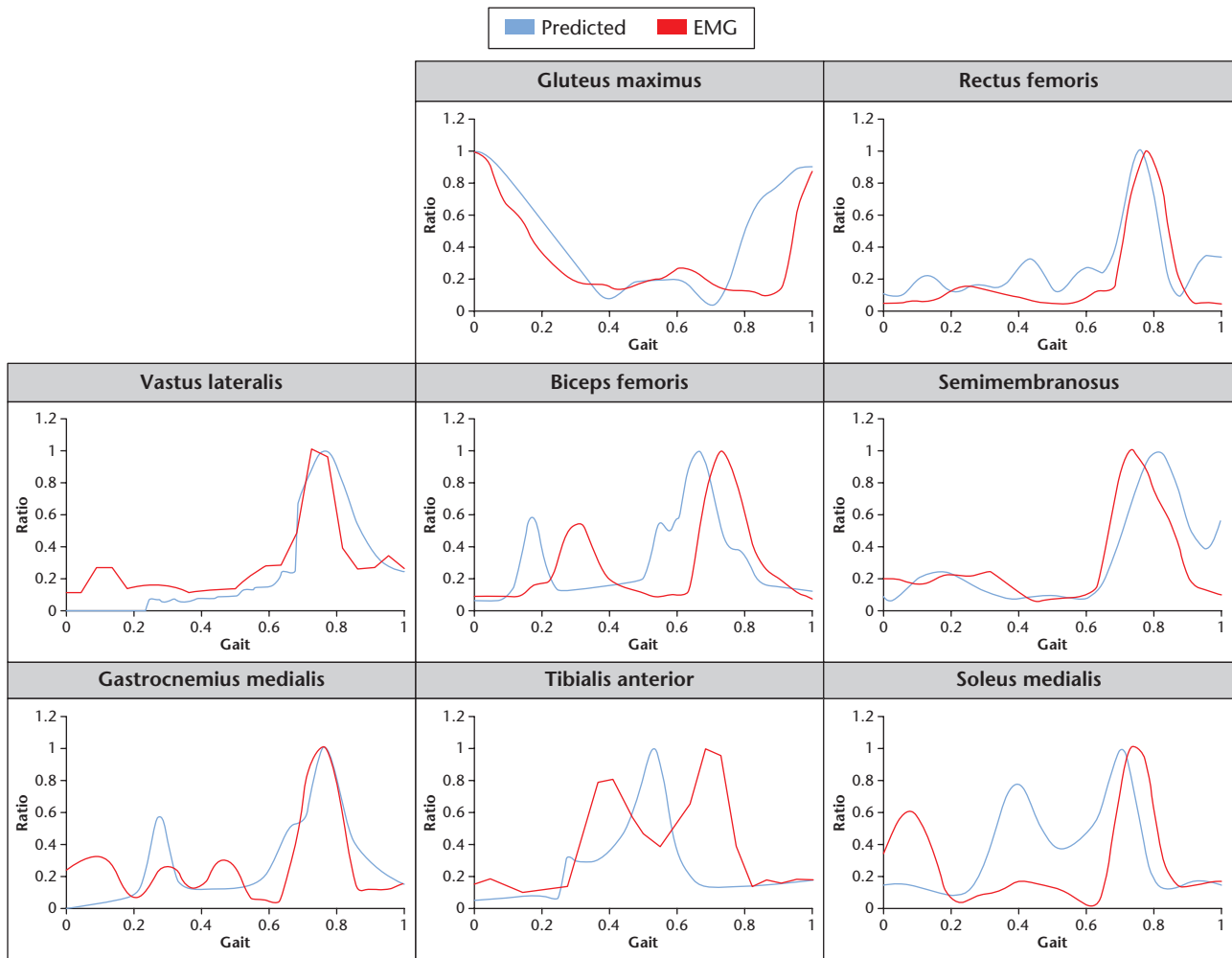


Fig. ad

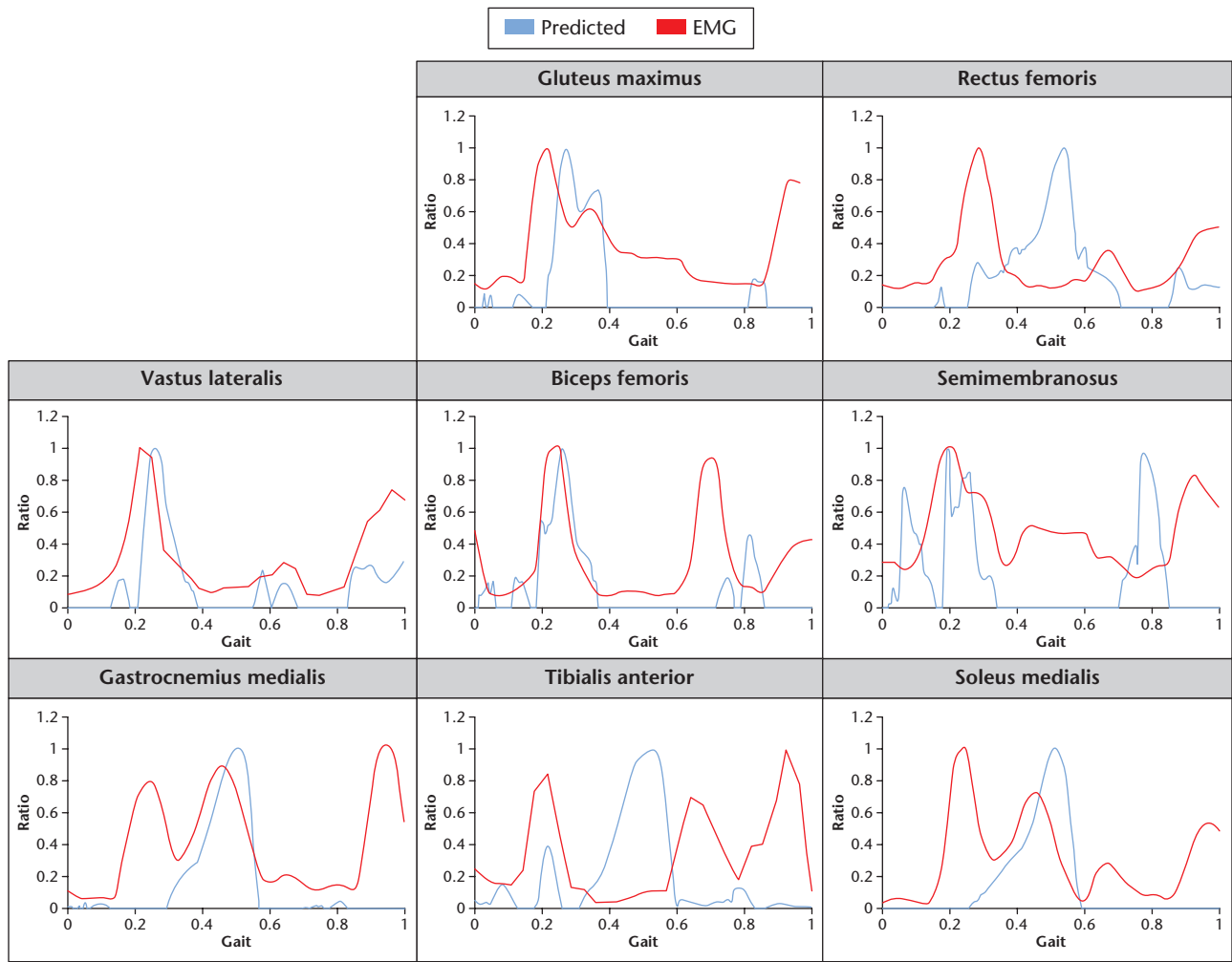


Fig. ae

The comparison between measured and predicted muscle activations with five subject-specific musculoskeletal models under normal gait conditions: a) model 1; b) model 2; c) model 3; d) model 4; and e) model 5. EMG, electromyography.

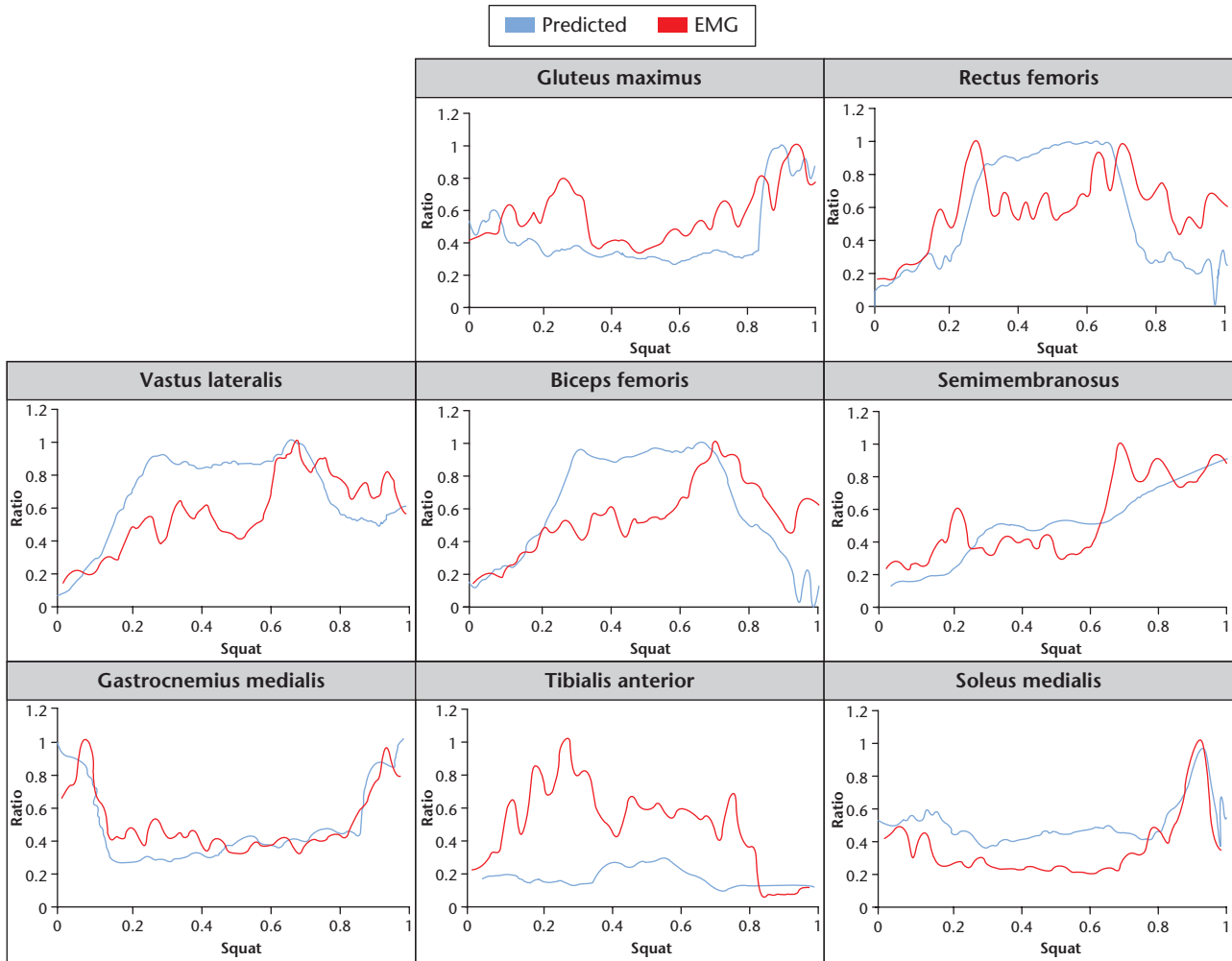


Fig. ba

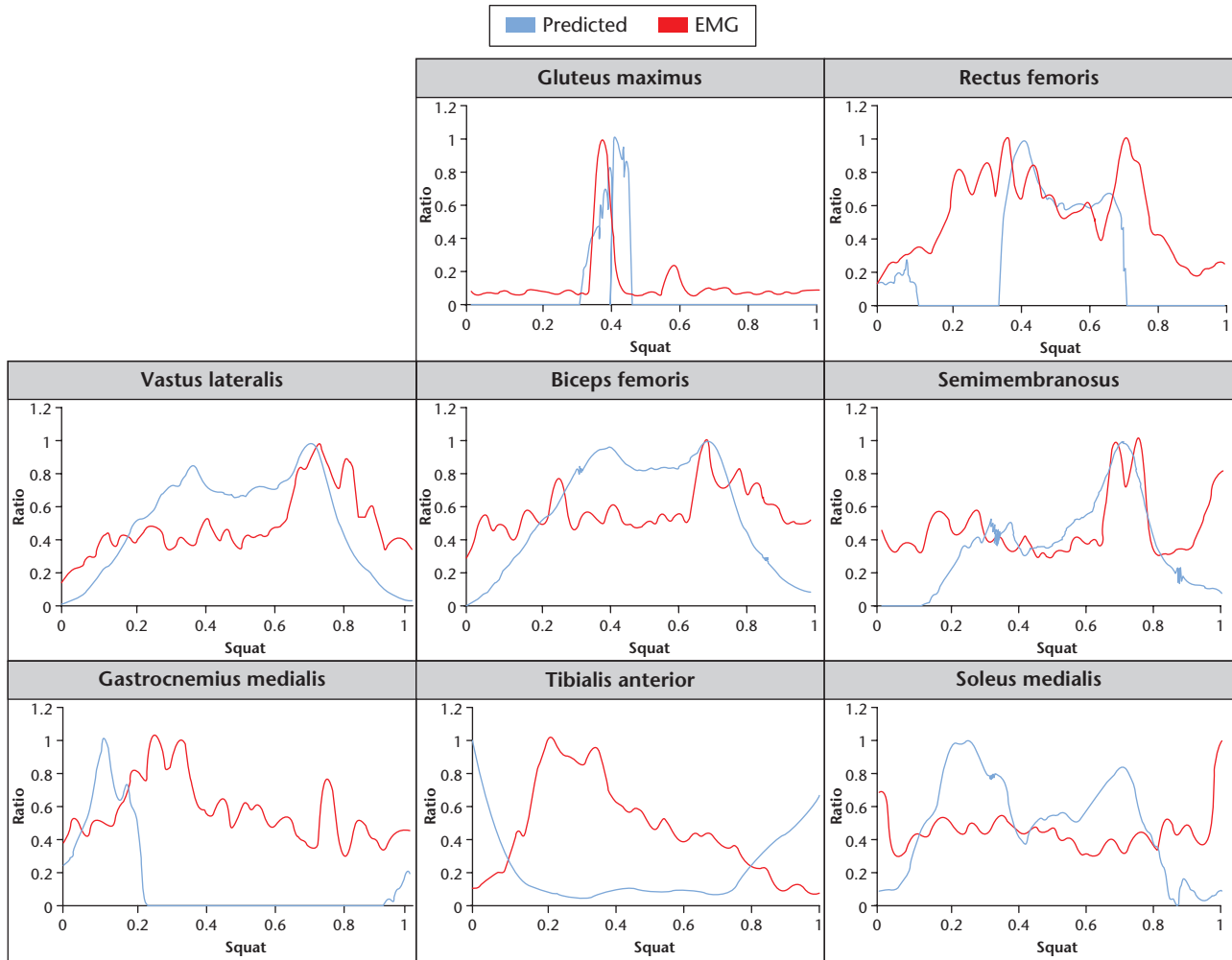


Fig. bb

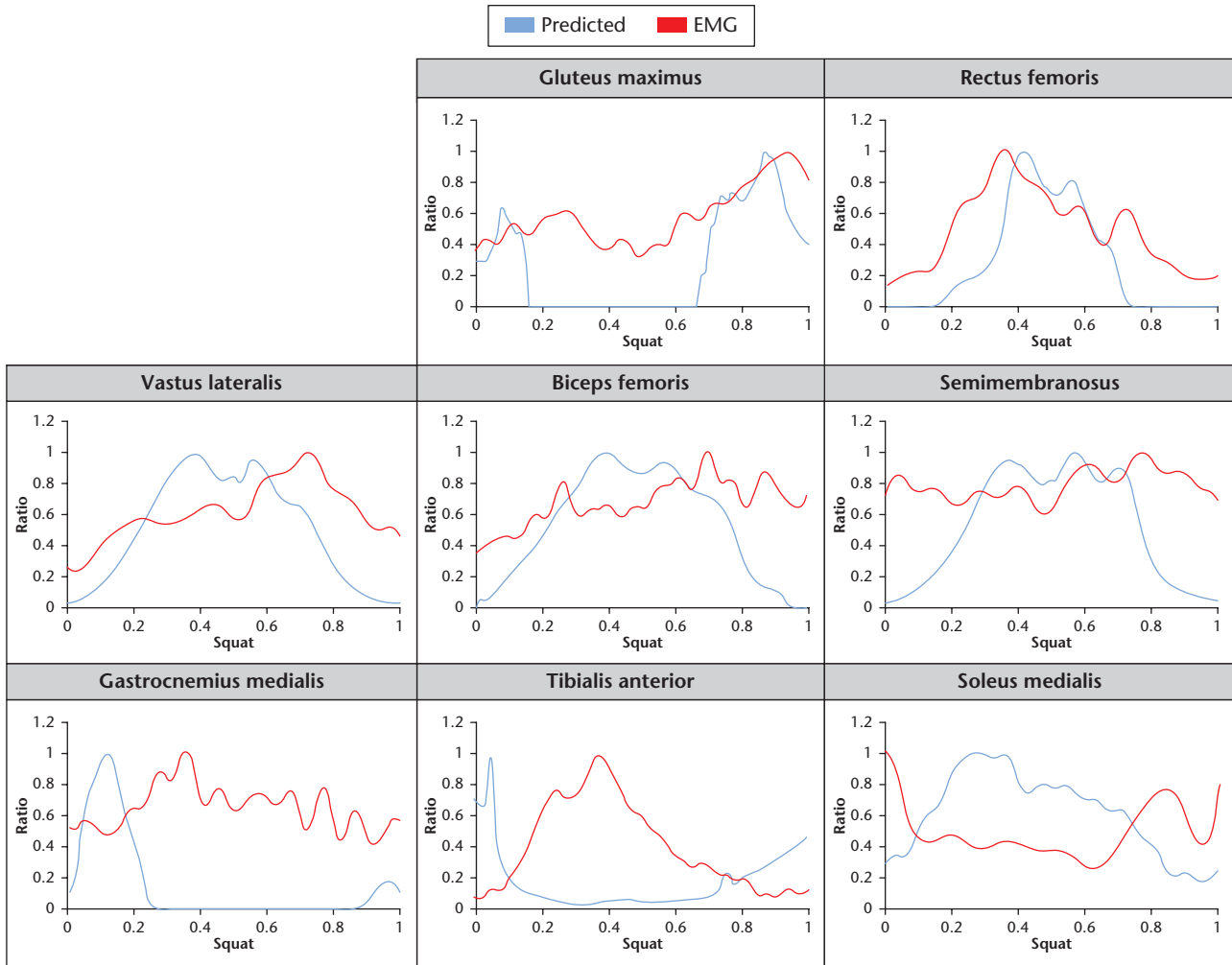


Fig. bc

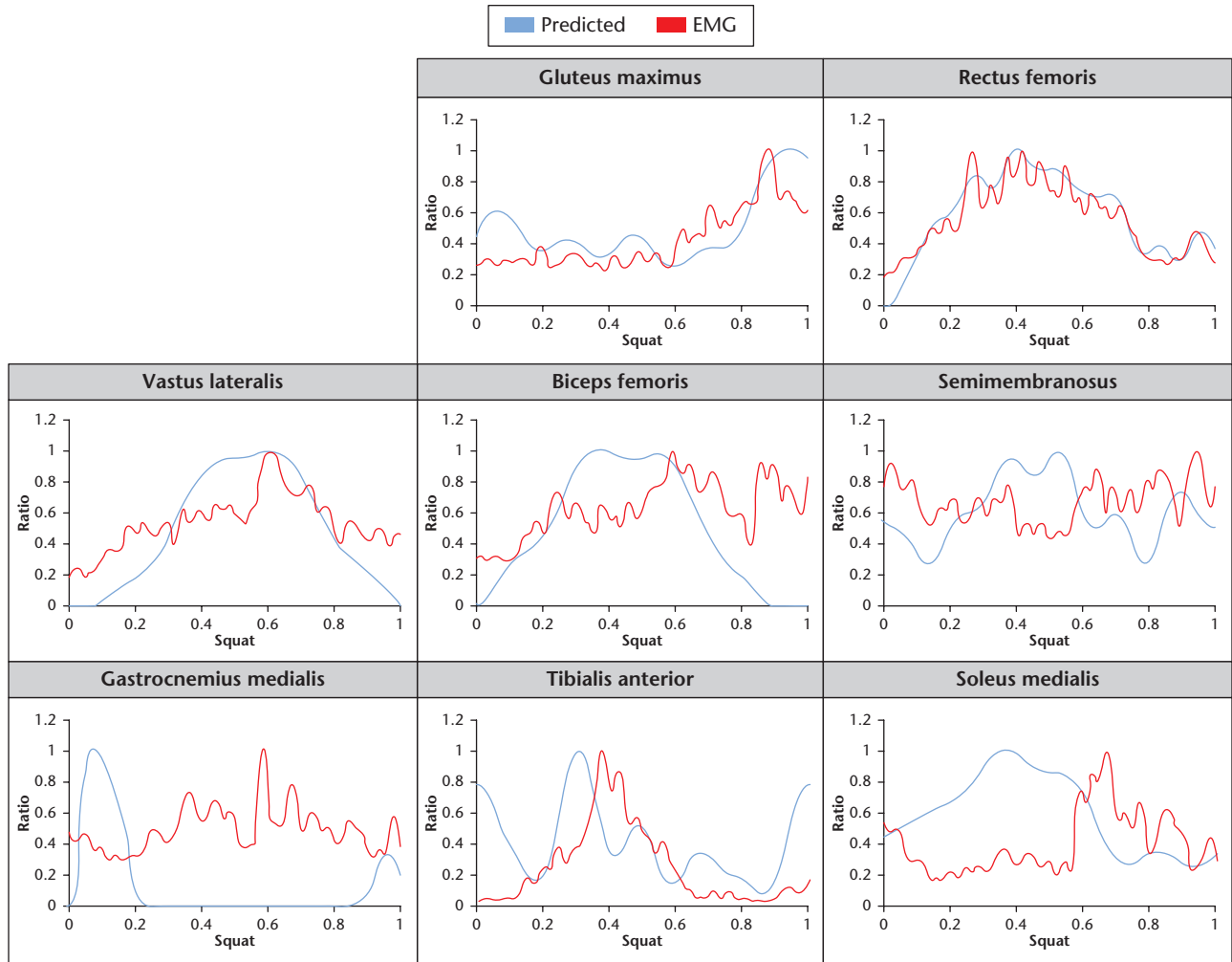


Fig. bd

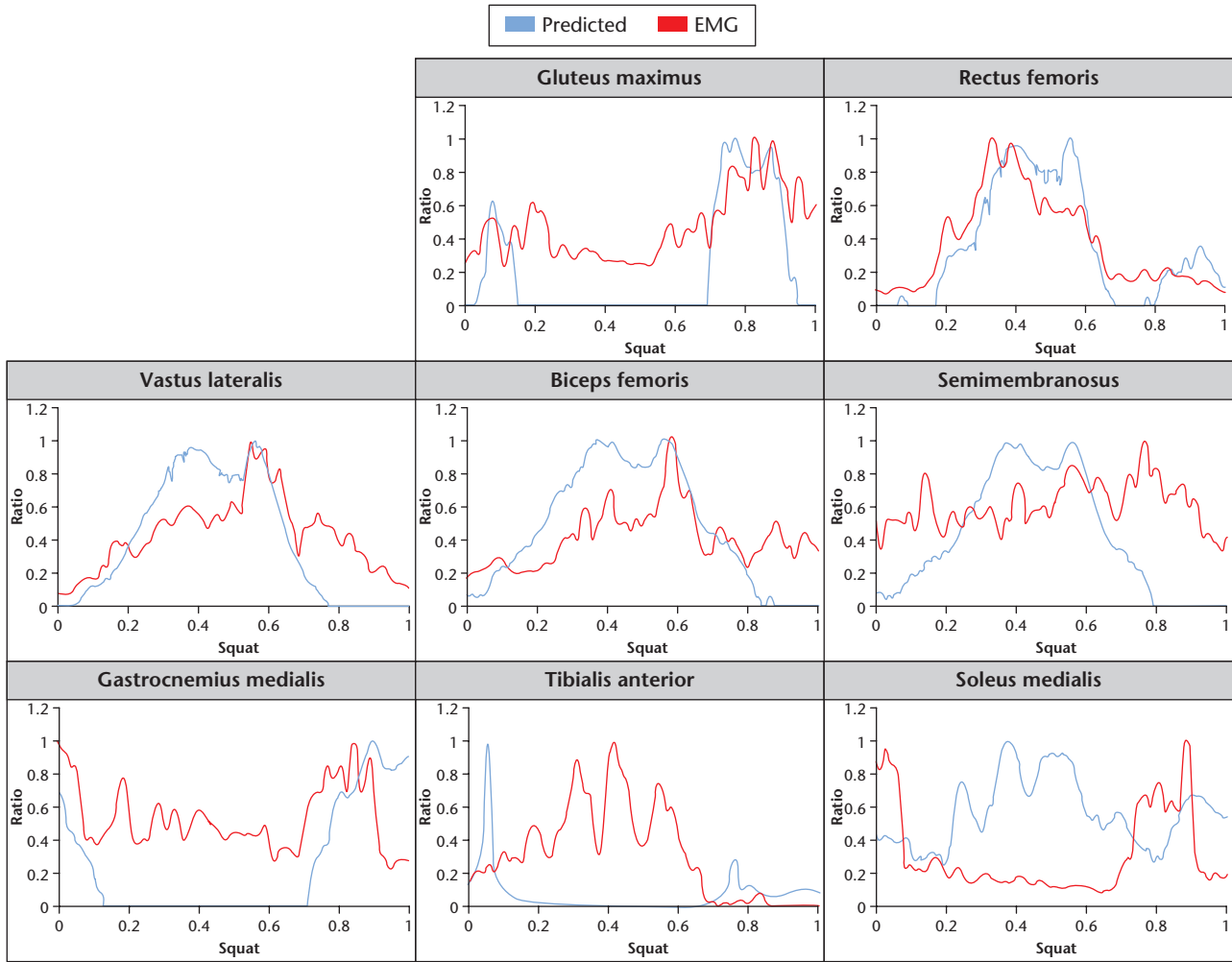


Fig. be

The comparison between measured and predicted muscle activations with five subject-specific musculoskeletal models under squat loading conditions: a) model 1; b) model 2; c) model 3; d) model 4; and e) model 5. EMG, electromyography.