

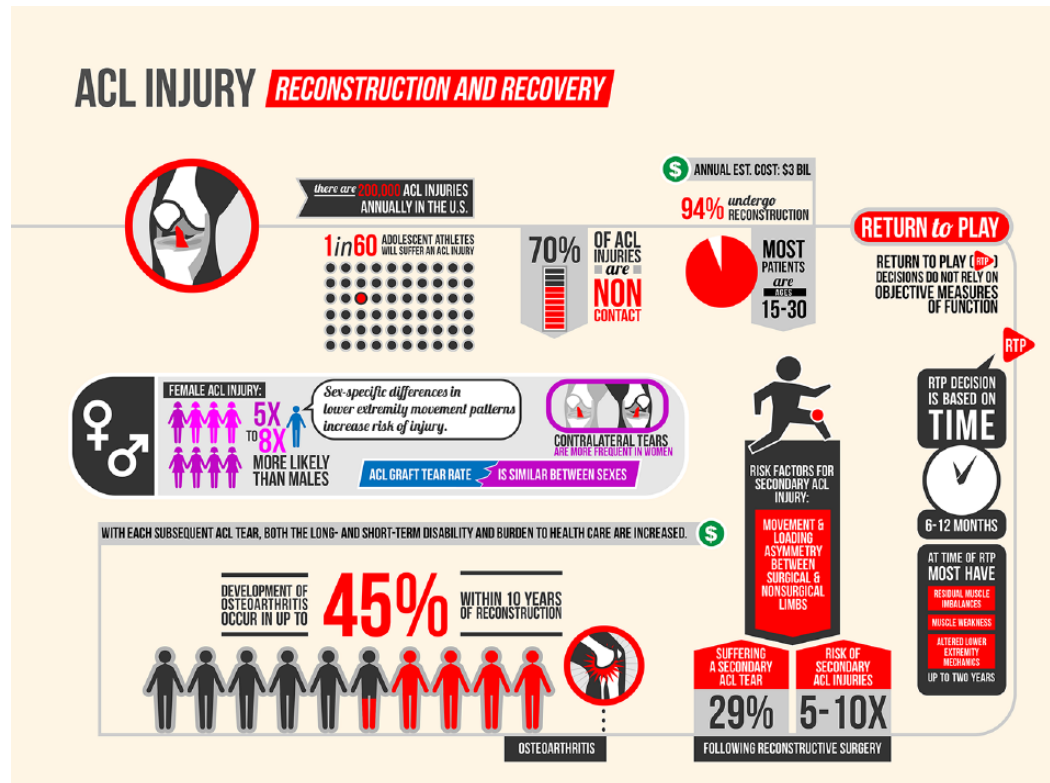


■ INFOGRAPHIC

Infographic: ACL injury reconstruction and recovery

R. M. Queen

Virginia Tech, Virginia, United States



Anterior cruciate ligament (ACL) injury is a considerable source of morbidity among athletes. Most ACL injuries (70%) are non-contact in nature, with women and patients aged between 15 and 30 years at particularly high risk.^{1,2} The vast majority of patients undergo surgical reconstruction, with annual costs associated with treatment and rehabilitation of ACL injuries estimated at \$3 billion.

While the risk of primary ACL injury has been studied extensively, there is limited understanding of the risk factors for secondary ACL injuries, and how these are related to return-to-play (RTP) assessments. RTP decisions often do not rely on objective measures of function, but are instead based on the time since surgical intervention.^{3,4} However, many athletes have residual muscle imbalances, muscle weakness, and altered lower

extremity mechanics at the time of RTP that may persist for up to two years following ACL reconstruction.^{5,6} With the current return to sport decision metrics, up to 29% of all ACL reconstruction patients will suffer a secondary tear.

The identified risk factors for secondary ACL injury have been focused on deficits in movement mechanics. Specifically, movement and loading asymmetry (knee extension moment asymmetry) between the surgical and non-surgical limbs, as well as an increase in frontal plane range of motion, have been identified as secondary ACL injury risk factors.⁷ Based on the increased risk for secondary ACL tears, and the knowledge that 45% of individuals will develop knee osteoarthritis within ten years of an ACL reconstruction, it is imperative that objective and measurable criteria

■ R. M. Queen, PhD, FACSM, Researcher, Department of Biomedical Engineering and Mechanics, Virginia Tech, Old Turner Street Blacksburg, VA 24061, USA and Department of Orthopaedic Surgery, Virginia Tech Carilion School of Medicine, USA.

Correspondence should be sent to R. M. Queen; email: rmqueen@vt.edu

doi: 10.1302/2046-3758.611. BJR-2017-0330


Bone Joint Res 2017;6:621–622.

are used when determining readiness to return to sports in order to decrease the risk of a secondary injury.⁸

References

1. **Brophy RH, Schmitz L, Wright RW, et al.** Return to play and future ACL injury risk after ACL reconstruction in soccer athletes from the Multicenter Orthopaedic Outcomes Network (MOON) group. *Am J Sports Med* 2012;40:2517-2522.
2. **Shelbourne KD, Gray T, Haro M.** Incidence of subsequent injury to either knee within 5 years after anterior cruciate ligament reconstruction with patellar tendon autograft. *Am J Sports Med* 2009;37:246-251.
3. **Barber-Westin SD, Noyes FR.** Factors used to determine return to unrestricted sports activities after anterior cruciate ligament reconstruction. *Arthroscopy* 2011;27:1697-1705.
4. **Barber-Westin SD, Noyes FR.** Objective criteria for return to athletics after anterior cruciate ligament reconstruction and subsequent reinjury rates: a systematic review. *Phys Sportsmed* 2011;39:100-110.
5. **Dai B, Butler RJ, Garrett WE, Queen RM.** Anterior cruciate ligament reconstruction in adolescent patients: limb asymmetry and functional knee bracing. *Am J Sports Med* 2012;40:2756-2763.
6. **Palmieri-Smith RM, Thomas AC, Wojtys EM.** Maximizing quadriceps strength after ACL reconstruction. *Clin Sports Med*. 2008;27:405-424, vii-ix.
7. **Paterno MV, Schmitt LC, Ford KR, et al.** Biomechanical measures during landing and postural stability predict second anterior cruciate ligament injury after anterior cruciate ligament reconstruction and return to sport. *Am J Sports Med* 2010;38:1968-1978.
8. **Lohmander LS, Ostberg A, Englund M, Roos H.** High prevalence of knee osteoarthritis, pain, and functional limitations in female soccer players twelve years after anterior cruciate ligament injury. *Arthritis Rheum* 2004;50:3145-3152.

Twitter

 Follow Robin Queen @rmqueen_VT
Bone Joint Research @BoneJointRes

Funding Statement

■ None declared

Conflicts of Interest Statement

■ None declared

© 2017 Queen. This is an open-access article distributed under the terms of the Creative Commons Attribution licence (CC-BY-NC), which permits unrestricted use, distribution, and reproduction in any medium, but not for commercial gain, provided the original author and source are credited.