

Table i. Categories of the Mayo Elbow Performance Index

Variable	Definition	Points, n
Pain (45 points)	None	45
	Mild	30
	Moderate	15
	Severe	0
Range of movement (20 points)	Arc > 100°	20
	Arc 50° to 100°	15
	Arc < 50°	5
Stability (10 points)	Stable	10
	Moderately stable	5
	Grossly unstable	0
Daily function (25 points)	Able to comb hair	5
	Able to feed oneself	5
	Able to perform personal hygiene tasks	5
	Able to put on shirt	5
	Able to put on shoes	5
Maximum possible total		100

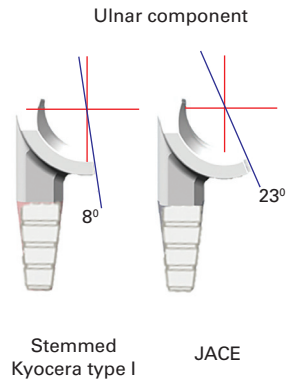
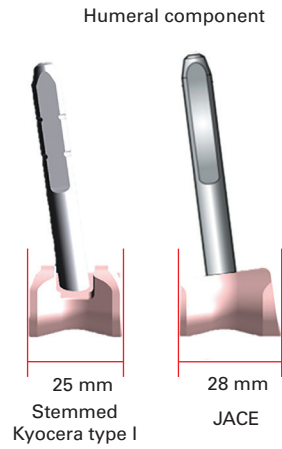


Fig. aa

Fig. ab

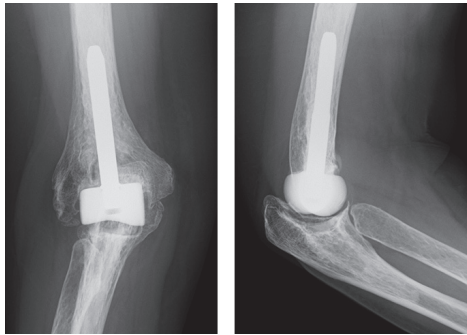


Fig. ac



Fig. ad

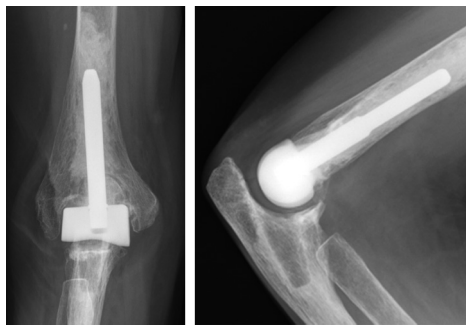


Fig. ae

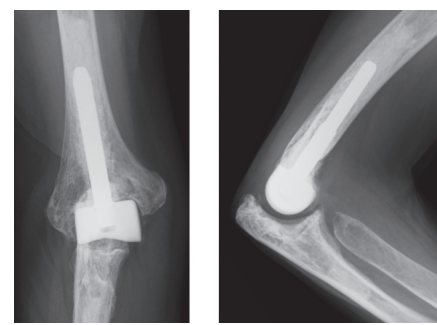


Fig. af

Differences in the design between stemmed Kyocera type I (SKC-I) and J-alumina ceramic elbow (JACE). aa) The width of the ceramic trochlea on the anteroposterior plane was extended by 3 mm. ab) The joint surface of the ulnar component was extended by 2.3 mm anteriorly to the coronoid process. ab-af) Five examples of radiographs over 13 years after JACE TEA